

PSPS

NORSROC Sub-Regional Framework

Friends of SEQ



19/03/2005 Paul Summers Planning Strategies 1

PSPS

Introduction

- PSPS background
- Background to the Sub-Regional Framework
 - Aim and objectives for the project
 - Context
 - Document structure
- Sub-Regional Framework
 - Sub-Regional Vision
 - Theme Vision
- Resources available
- Documentation availability via web

19/03/2005 Paul Summers Planning Strategies 2

PSPS

Project Aims & Objectives


- Aims:
 - To establish common planning principles reflecting NORSROC subregional interests **to inform the SEQ2021 regional planning process**, and
 - To provide a **basis for collaboration between NORSROC Councils and other agencies** on cross-boundary and cross-jurisdictional issues.
- Objectives
 - To agree on a **shared vision and outcomes for the future** of the NORSROC area and of its communities-of-interest.
 - To agree on delineation of **"go/no-go" areas based on shared criteria**.
 - To agree on a **distribution of centres, corridors and other major elements** and features that will determine a desired pattern of development based on shared criteria.
 - To agree on **sub-region scale principles and strategies** to support the vision and outcomes.
 - To agree on **actions to bring the framework into effect**.

19/03/2005 Paul Summers Planning Strategies 3

PSPS

Regional vs Sub-Regional

- Regional
- Sub-Regional
- Nothing to do with regional and sub-regional shopping centres!



19/03/2005 Paul Summers Planning Strategies 4

PSPS

Context: Relationship to Planning Schemes

- The Sub-Regional Framework:
 - Draws from the planning schemes for each of the seven local governments;
 - Uses those schemes as the foundation for its outcomes; and
 - Teases out the elements that are of sub-regional significance.
- It also:
 - Uses and coordinates the outcomes of the Sustainable NORSROC Workshops held in September 2002 and March 2003 at Corbould Park; and
 - Coordinates the outcomes of survey work carried out with Councils in 2003.
 - Extensive range of statistical information, presented with both data and graphs via the web
- It addresses issues at the sub-regional plane and does not attempt to drill down to local issues.

19/03/2005 Paul Summers Planning Strategies 5

PSPS


Context: Relationship to SEQ2021/OUM Regional Plan

- From the brief, the Sub-Regional Framework is intended *to inform the SEQ2021 regional planning process*.
- From Terry Mackenroth's statement in early June, there will be a regional plan by October.
- At its June 2004 meeting, NORSROC was asked to consider the following during the presentation - what is the role for the sub-regional framework?
 - Is it a tool to react to a top-down October regional plan; or
 - Is it a bottom-up plan that should have a strong role in guiding the October regional plan.

19/03/2005 Paul Summers Planning Strategies 6

Document Structure 1

- Communities of Interest:
 - Moreton Bay North
 - Sunshine Coast
 - Sunshine Hinterland



19/03/2005 Paul Summers Planning Strategies 7

Document Structure 2

Vision for the Sub-Region

Moreton Bay North | Sunshine Coast | Sunshine Hinterland

Informing | Supporting

Vision for a Theme

Background

Desired Outcomes

Performance Measures | Economic, Tourism & Lifestyle Role

Key Challenges to Achieving Outcomes

Key Strategies

19/03/2005 Paul Summers Planning Strategies 8

Document Structure 3

- Simplicity - avoiding complexity so its outcomes are not clouded
- Does not attempt to address everything:
 - First because planning schemes do this;
 - Second because of the resources available to the exercise; and
 - Third and very importantly, because its focus is on the issues that will make a difference – other aspects will then fall into place.
- Its terminology and style has to work between the different philosophies of approach in use by the seven local governments.

19/03/2005 Paul Summers Planning Strategies 9

Sub-Regional Vision 1

- The sub-regional vision has a very simple message. It recognises that NORSROC's point of difference with Brisbane and SOUTHROC is:
 - Lifestyle – rich and diverse, where the pace is more relaxed, as compared to city life
 - Naturalness and open spaces – lots of open space and natural area settings with settlement placed within those areas
- With climate and the proximity to metropolitan services, these simple elements are the keys to the sub-region's attractiveness as a place to live and visit.

19/03/2005 Paul Summers Planning Strategies 10


Sub-Regional Vision 2

- Quoting directly from the vision statement:
 - The sub-region is projected to grow to a resident population of around 878,000 persons at 2021. Growth to this level will place pressures on the ability to preserve the lifestyle enjoyed in the sub-region.*
 - The vision for the sub-region is to control and contain growth and development to ensure that the more relaxed pace of life, the open space resources and the potentially lower pressures may be preserved and to celebrate the richness and diversity of lifestyle that is available.*
 - Inherent in this vision is recognition that protecting these attributes will assist in providing a secure economic future.*

19/03/2005 Paul Summers Planning Strategies 11

Community of Interest Vision: Moreton Bay North


- Key points include:
 - Greater self-sufficiency
 - Expansion of employment centres
 - Focus on population growth around district centres and above
 - Maintenance of lifestyle choice
 - Greater focus on public transport
 - Maintaining that non-metropolitan way of life (the relaxed pace, the access to open spaces, etc.) will be a continual challenge
 - Protection of water supply catchments



19/03/2005 Paul Summers Planning Strategies 12

Community of Interest Vision: Sunshine Coast


- Key points include:
 - Maintenance of the Sunshine Coast's point of difference with the Gold Coast and the Brisbane and Moreton Bay North areas
 - Focus on population growth around district centres and above
 - Improved self-sufficiency
 - Maintenance of an agricultural sector
 - Protection of the character and identity of the places making up the Sunshine Coast
 - Public transport will be a key focus for preserving lifestyle and avoiding the traffic congestion of cities
 - Protecting lifestyle characteristics and visitor attractiveness delivered by the Sunshine Coast's open spaces, clean waters and the like will be a continual challenge.



19/03/2005 Paul Summers Planning Strategies 13

Community of Interest Vision: Sunshine Hinterland

- Key points include:
 - Maintenance of small dispersed communities
 - Focus on growth around district centres
 - Maintenance of a significant agricultural sector
 - Protection of village character and resident lifestyle



19/03/2005 Paul Summers Planning Strategies 14


Theme Vision

- Themes:
 - Economic;
 - Resources: Environment & Open Space;
 - Resources: Human-Related;
 - Image & Character;
 - Institutional Aspects;
 - Community Well-Being;
 - Transport; and
 - Urban & Rural Settlement
- The themes provide the finer level detail on what the vision means.
- Flavour of what is in the document.

19/03/2005 Paul Summers Planning Strategies 15

Economic Vision 1

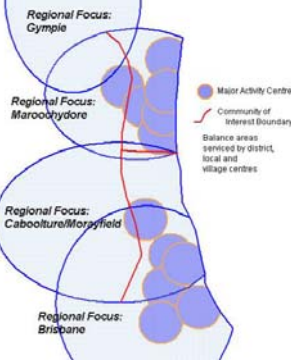
- A network of diverse economies supporting a non-centralised, sub-regional economy:
 - Moreton Bay North:**
 - Improved levels of self-containment are achieved where there is no longer reliance and dependence on the Brisbane metropolitan area for retail, service functions and employment.
 - Sunshine Coast:**
 - Improved levels of self-containment are achieved by maintaining a diverse range of local economies, whilst providing dedicated higher order services at Maroochydore.
 - Sunshine Hinterland:**
 - Improved levels of self-containment are achieved by maintaining a diverse range of local economies with a rural base, where each is focussed on district centres.



19/03/2005 Paul Summers Planning Strategies 16

Economic Vision 2


- Centres are retail, employment, education, rural centres – not just shopping centres.
- Network of major activity centres and multiple function centres:
 - In the south:
 - Caboottle/Morayfield, Kippa-Ring/Redcliffe, Mango Hill (North Lakes), and Strathpine/Brendale
 - In the north:
 - Caloundra, Kawana, Maroochydore, Nambour, Noosaville and Sippy Downs
- Conceptually the centres structure is the focus for:
 - Future population growth; and
 - Where the focus for activity and spending on infrastructure should be



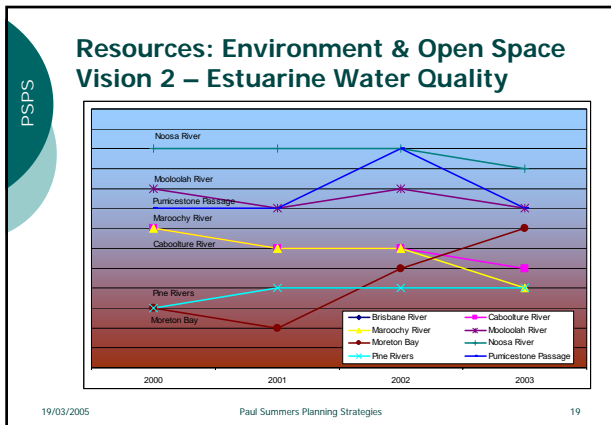
19/03/2005 Paul Summers Planning Strategies 17

Resources: Environment & Open Space Vision 1

- Retention of 40% vegetation cover across the sub-region with:
 - A nett increase in vegetation in the Moreton Bay North and Sunshine Coast Communities of Interest
 - A nett increase in the proportion of vegetation held in protective tenure or other suitable management regimes.
- Improving or maintaining high standards of water quality in all waterways.



19/03/2005 Paul Summers Planning Strategies 18



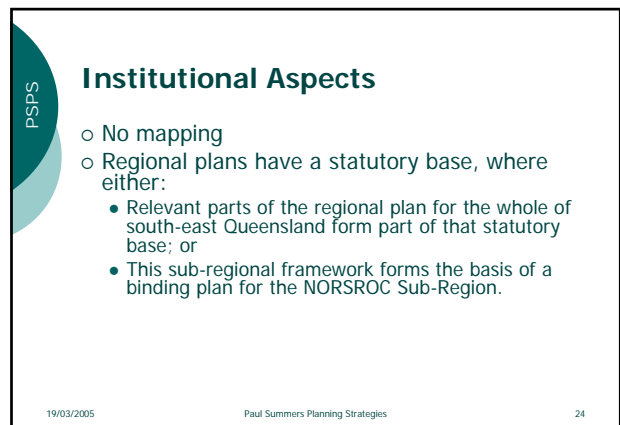
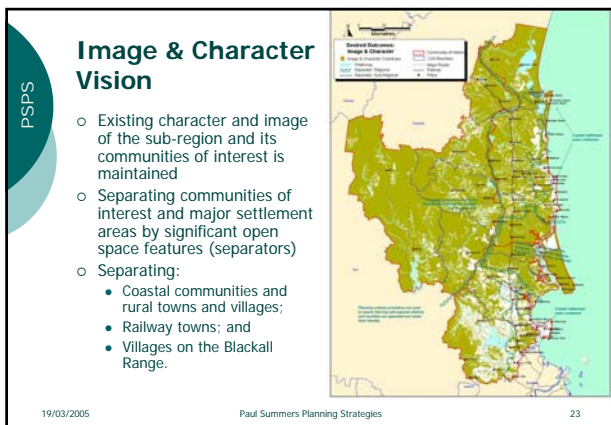
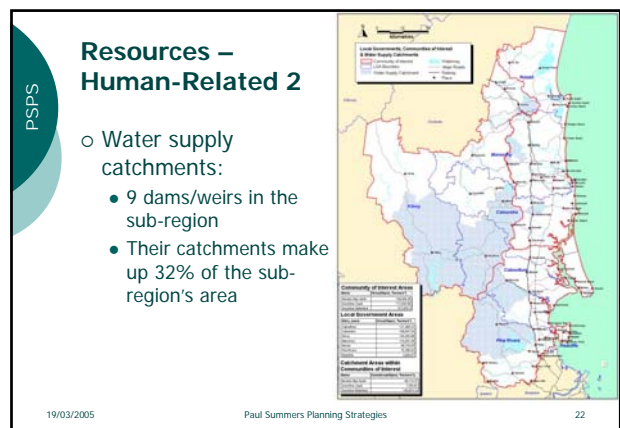
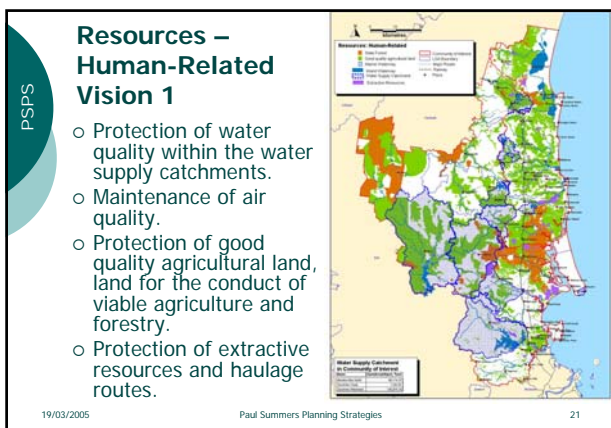
Resources: Environment & Open Space Vision 3

o Performance Measures:

- Water quality targets depicted in Table 8.1 are achieved by 2021.


Waterway System	Report Card Status							
	Estuarine				Freshwater			
	2000	2001	2002	2003	Target 2021	2002	2003	Target 2021
Brisbane River						D+	D	C
Caboolture River	C+	C	C	C-	B	C	B+	A
Deception Bay	D	D-	C-	C+	B+			
Maroochy River	C+	C	C	D+	B-	C+	C	B+
Mooloolah River	B	B-	B	B-	A-	C+	C	B+
Noosa River	A-	A-	A-	B+	A	A-	A-	A
Pine Rivers	D	D+	D+	D+	C-	C	C	C+
Pumicestone Passage	B-	B-	A-	B-	A-	C	B+	A
Stanley River						B-	B-	B+

19/03/2005 Paul Summers Planning Strategies 20



Community Well-Being Vision 1

- Socially cohesive communities, where the provision of essential services and infrastructure keeps pace with the communities' changing needs and where:
 - Vibrant communities enjoy a relaxed lifestyle;
 - A better balance of community demographics is achieved than is currently predicted for 2021;
 - Levels of housing choice and affordability are maintained and improved;
 - Planning for and delivery of timely social infrastructure and essential services;
 - Community participation in regional planning;
 - Protection of community cultural identity and heritage;
 - Enhanced mobility, community safety and accessibility.

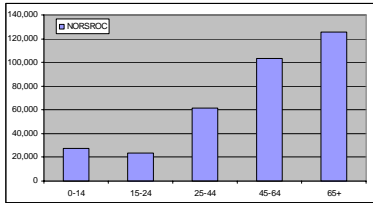


19/03/2005 Paul Summers Planning Strategies 25

Community Well-Being 2

- Structural differences in age over time:

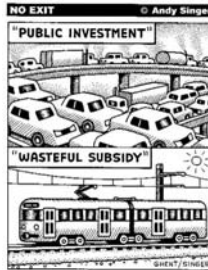
Age	2001	2021	Difference (%)	Difference (persons)
0-14	21.9%	16.5%	-5.4%	27,292
15-24	12.3%	10.2%	-2.1%	23,672
25-44	27.9%	24.1%	-3.8%	61,792
45-64	24.7%	26.8%	2.2%	103,037
65+	13.1%	22.3%	9.2%	125,350



19/03/2005 Paul Summers Planning Strategies 26

Transport Vision 1

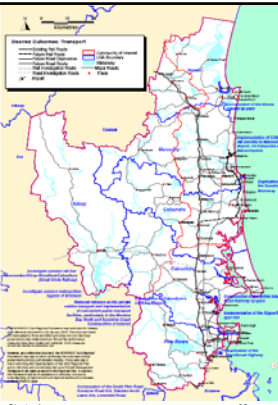
- Significant improvement in overall standards of access to goods, services, employment, education, recreation and to opportunities for social, cultural and artistic contact and exchange without unacceptable impact on the environment or the character of the sub-region:
 - Improving the mode share of passenger transport, cycling and walking.
 - Improving service standards of passenger transport.
 - Ensuring most new urban settlement is focussed on regional, sub-regional and district centres with efficient passenger transport available.
 - Ensuring an overall per-capita total vehicle kilometres travelled is substantially reduced.



19/03/2005 Paul Summers Planning Strategies 27

Transport Vision 2


- Rail proposals included:
 - Sunshine Coast CAMCOS
 - Petrie-Kippa Ring
 - Western line (Great Circle Railway) – Toowoomba-Kilcoy-Woodford Caboolture:
- No recognition for Caboolture airport or Caloundra proposal
- Various by-pass roads including a potential western Brisbane by-pass



19/03/2005 Paul Summers Planning Strategies 28

Urban & Rural Settlement Vision 1

- Population growth in the NORSROC Sub-Region is accommodated substantially within urban settlement areas that are designed to maintain the character, lifestyle and environment enjoyed by existing communities:
 - Diversity and choice in and across local government areas maintained;
 - More functionally effective and efficient patterns of urban development;
 - Clearer focus on centres at all levels of the network; and
 - Reinforcement of character and identity of "places".

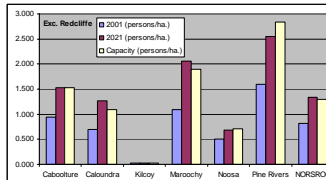


19/03/2005 Paul Summers Planning Strategies 29

Urban & Rural Settlement Vision 2

- Population density change 2001-2021

LGA	2001 (persons/ha.)	2021 (persons/ha.)	Capacity (persons/ha.)
Caboolture	0.944	1.528	1.526
Caloundra	0.696	1.271	1.095
Kilcoy	0.023	0.028	0.028
Maroochy	1.096	2.057	1.895
Noosa	0.505	0.683	0.707
Pine Rivers	1.601	2.553	2.830
Redcliffe	13.825	15.766	16.627
NORSROC	0.816	1.335	1.295

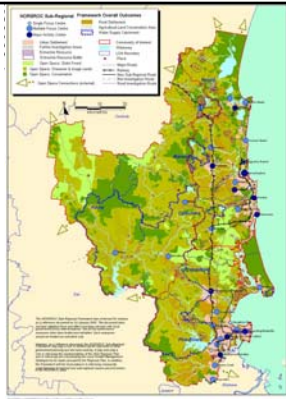


19/03/2005 Paul Summers Planning Strategies 30

PSPS

Overall Sub-Regional Framework Map

- RFGM's Indicative Growth Pattern:
 - Is (or should be) one of the focal points for capital expenditure by the State
- NORSROC's Sub-Regional Framework:
 - Could be the focus for future capital expenditure



19/03/2005 Paul Summers Planning Strategies 31

PSPS

Document Status

- Adopted by NORSROC as a reference document in August 2004
- Not formally released, however in January 2005, NORSROC resolved to have the security lifted on the documentation
- This enabled Councils to make use of the document and the community to access its information
- Availability:
 - www.paulsummersplanning.com.au
 - Click Client Page in left frame
 - Then Click NORSROC

19/03/2005 Paul Summers Planning Strategies 32