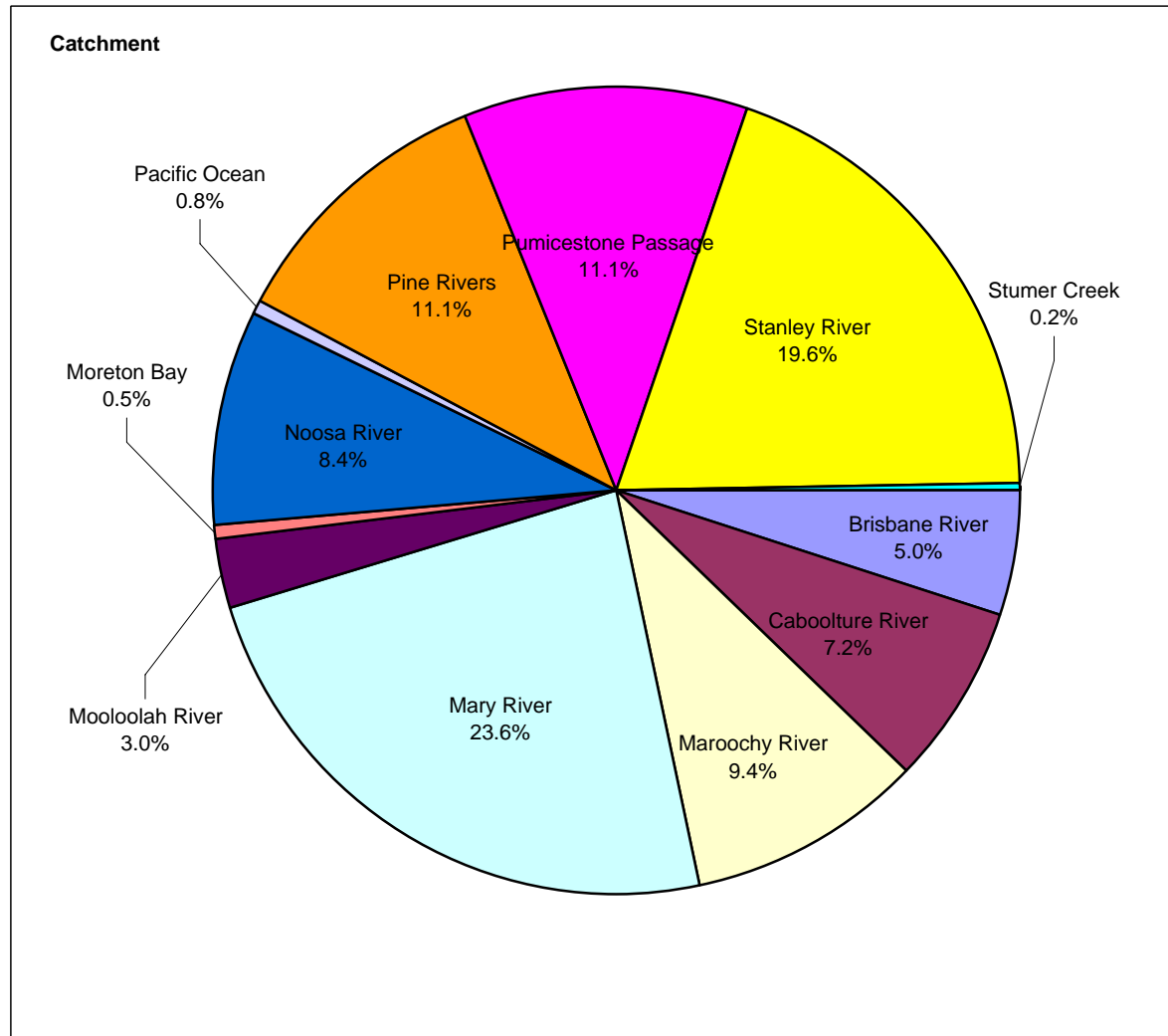


NORSROC SUB-REGIONAL FRAMEWORK: Statistical Analysis

Area x Catchment

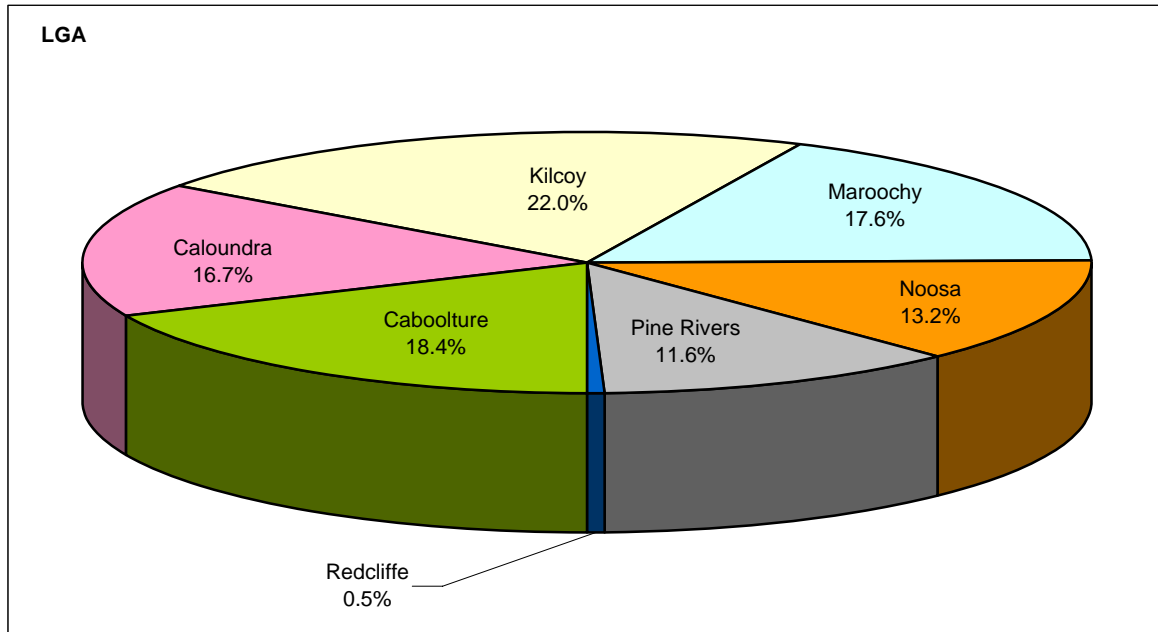
CATCHMENT	Area (ha.)	%
Brisbane River	33,177	5.0%
Caboolture River	47,151	7.2%
Maroochy River	61,711	9.4%
Mary River	155,481	23.6%
Mooloolah River	19,724	3.0%
Moreton Bay	3,607	0.5%
Noosa River	55,247	8.4%
Pacific Ocean	5,215	0.8%
Pine Rivers	73,253	11.1%
Pumicestone Passage	73,403	11.1%
Stanley River	129,319	19.6%
Stumer Creek	1,293	0.2%
NORSROC	658,581	100.0%



NORSROC SUB-REGIONAL FRAMEWORK: Statistical Analysis

Area x LGA

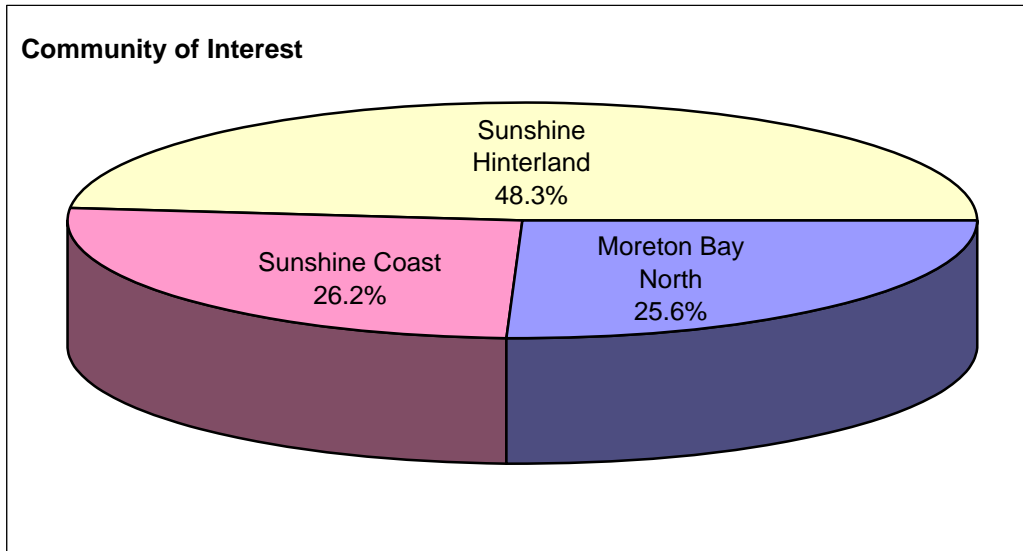
LGA	Area (ha.)	%
Caboolture	121,089	18.4%
Caloundra	109,548	16.7%
Kilcoy	144,455	22.0%
Maroochy	116,091	17.6%
Noosa	86,734	13.2%
Pine Rivers	76,387	11.6%
Redcliffe	3,585	0.5%
NORSROC	657,888	100.0%



NORSROC SUB-REGIONAL FRAMEWORK: Statistical Analysis

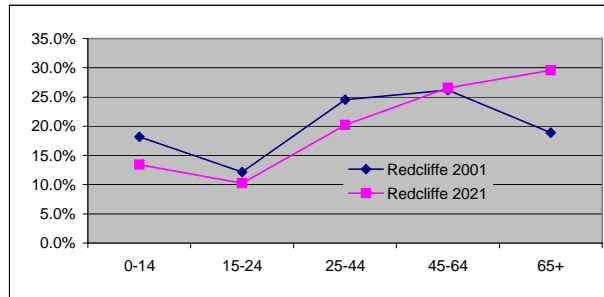
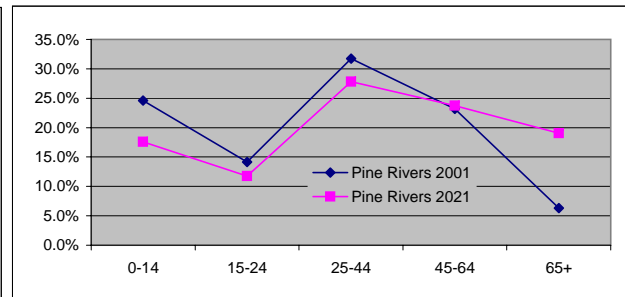
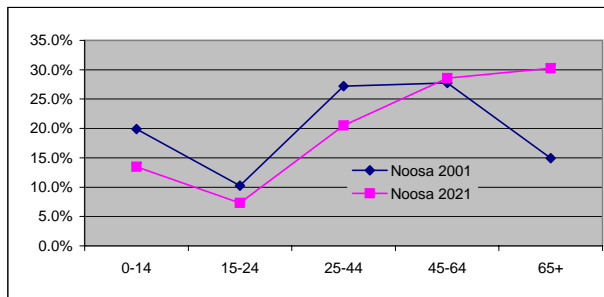
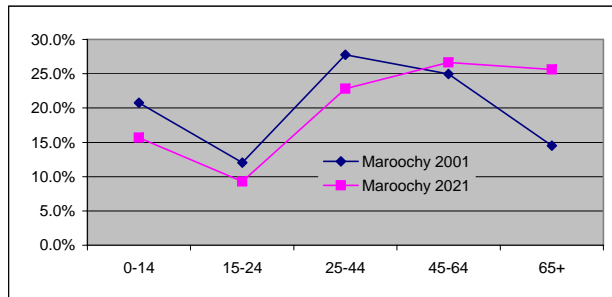
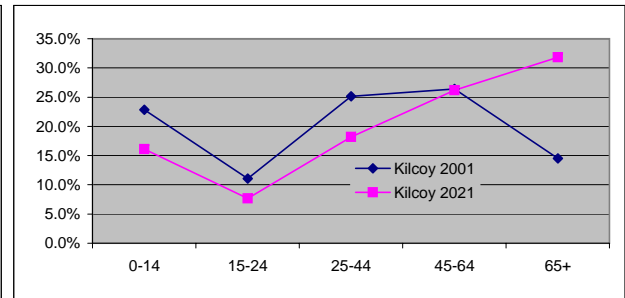
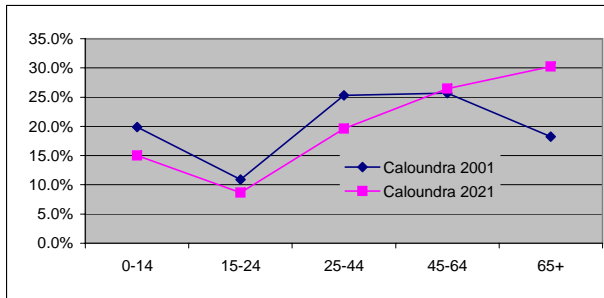
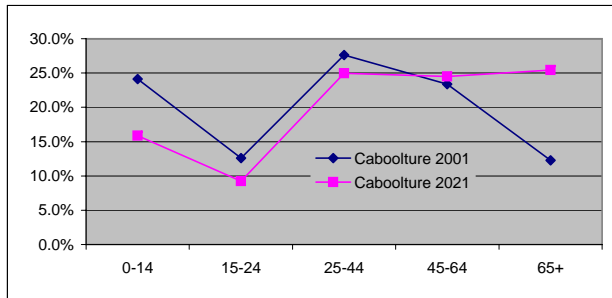
Area x Community of Interest

COMMUNITY OF INTEREST	Area (ha.)	%
Moreton Bay North	168,435	25.6%
Sunshine Coast	172,293	26.2%
Sunshine Hinterland	317,876	48.3%
NORSROC	658,604	100.0%



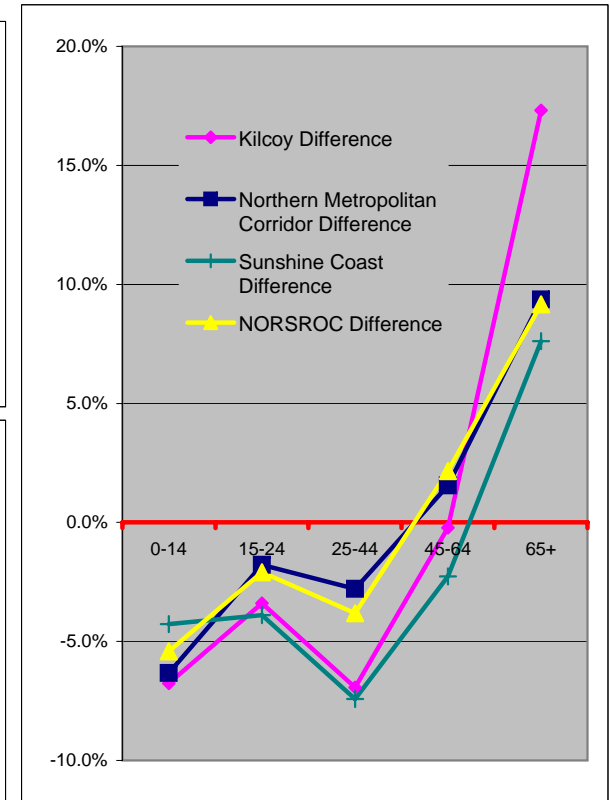
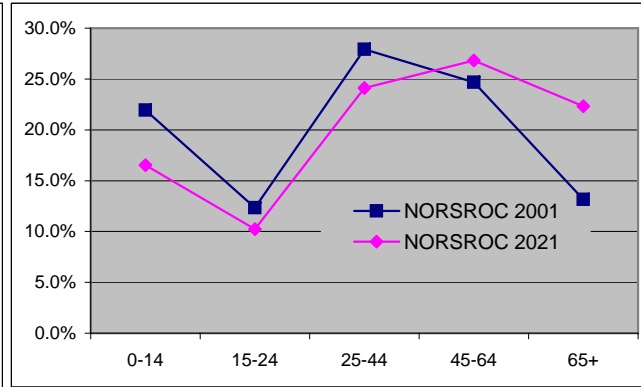
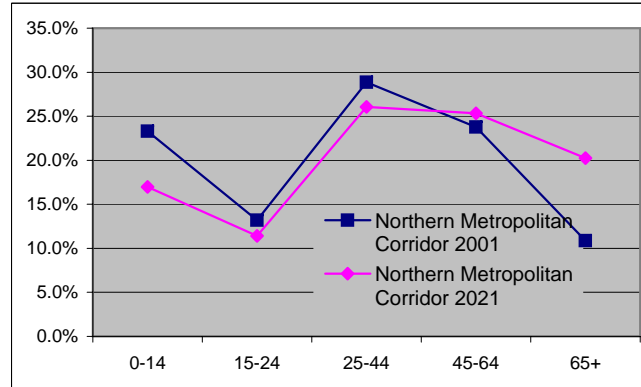
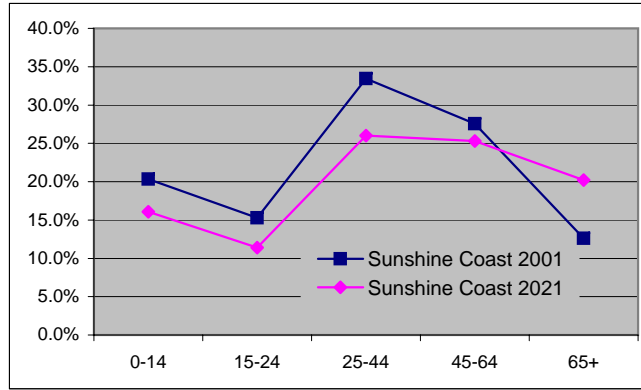
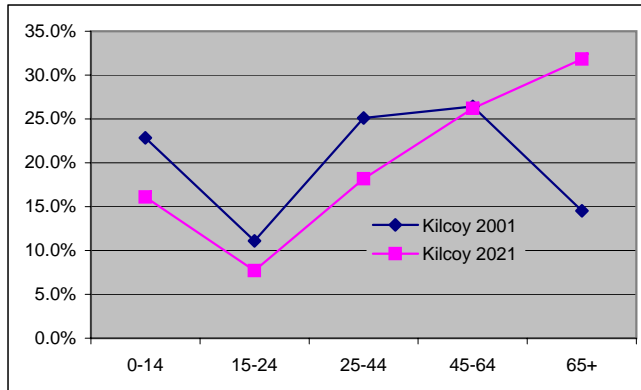
Age	Caboolture		Caloundra		Kilcoy		Maroochy		Noosa		Pine Rivers		Redcliffe	
	2001	2021	2001	2021	2001	2021	2001	2021	2001	2021	2001	2021	2001	2021
0-14	24.1%	15.9%	19.9%	15.0%	22.9%	16.1%	20.7%	15.7%	19.9%	13.5%	24.6%	17.6%	18.2%	13.4%
15-24	12.6%	9.3%	10.9%	8.7%	11.1%	7.7%	12.0%	9.3%	10.2%	7.3%	14.1%	11.8%	12.1%	10.2%
25-44	27.6%	25.0%	25.3%	19.6%	25.1%	18.2%	27.7%	22.8%	27.2%	20.5%	31.7%	27.8%	24.6%	20.2%
45-64	23.4%	24.5%	25.7%	26.4%	26.4%	26.2%	25.0%	26.6%	27.7%	28.5%	23.2%	23.7%	26.2%	26.6%
65+	12.2%	25.4%	18.2%	30.3%	14.5%	31.8%	14.5%	25.6%	15.0%	30.2%	6.3%	19.1%	18.9%	29.6%

Source: PIFU supplied data (11/2003)

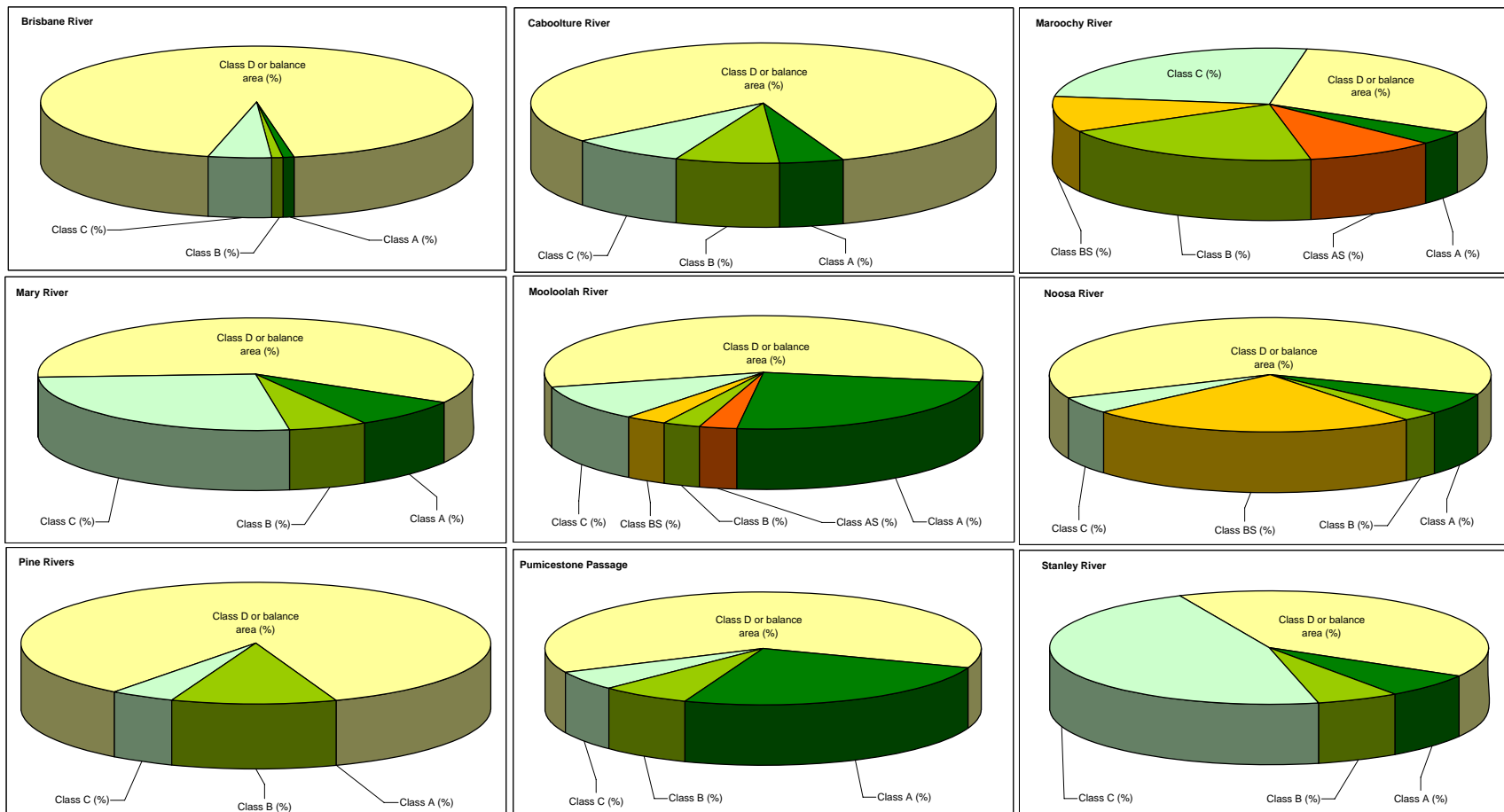


Age	Kilcoy			Northern Metropolitan Corridor			Sunshine Coast			NORSROC			Absolute Difference
	2001	2021	Difference	2001	2021	Difference	2001	2021	Difference	2001	2021	Difference	
0-14	22.9%	16.1%	-6.8%	23.3%	17.0%	-6.3%	20.3%	16.1%	-4.3%	21.9%	16.5%	-5.4%	27,292
15-24	11.1%	7.7%	-3.4%	13.2%	11.4%	-1.8%	15.3%	11.4%	-3.9%	12.3%	10.2%	-2.1%	23,672
25-44	25.1%	18.2%	-6.9%	28.8%	26.0%	-2.8%	33.4%	26.0%	-7.4%	27.9%	24.1%	-3.8%	61,792
45-64	26.4%	26.2%	-0.2%	23.8%	25.3%	1.5%	27.6%	25.3%	-2.3%	24.7%	26.8%	2.2%	103,037
65+	14.5%	31.8%	17.3%	10.9%	20.2%	9.4%	12.6%	20.2%	7.6%	13.1%	22.3%	9.2%	125,350

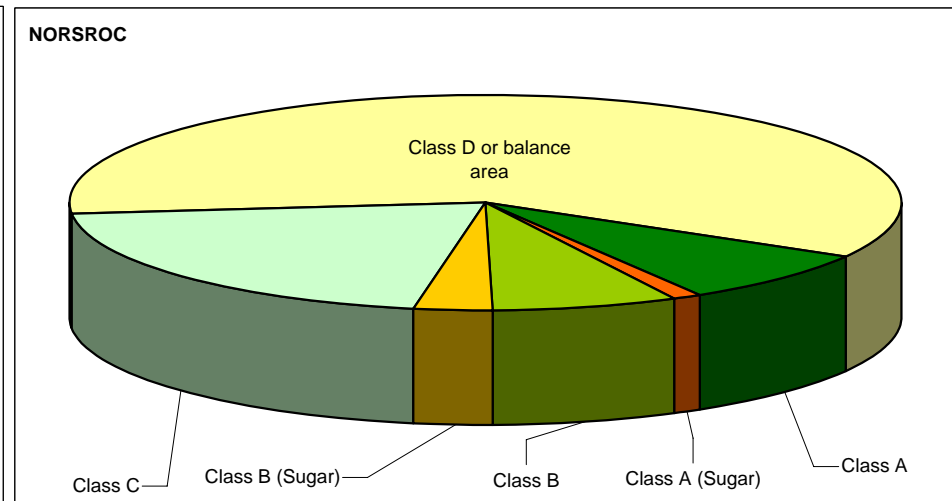
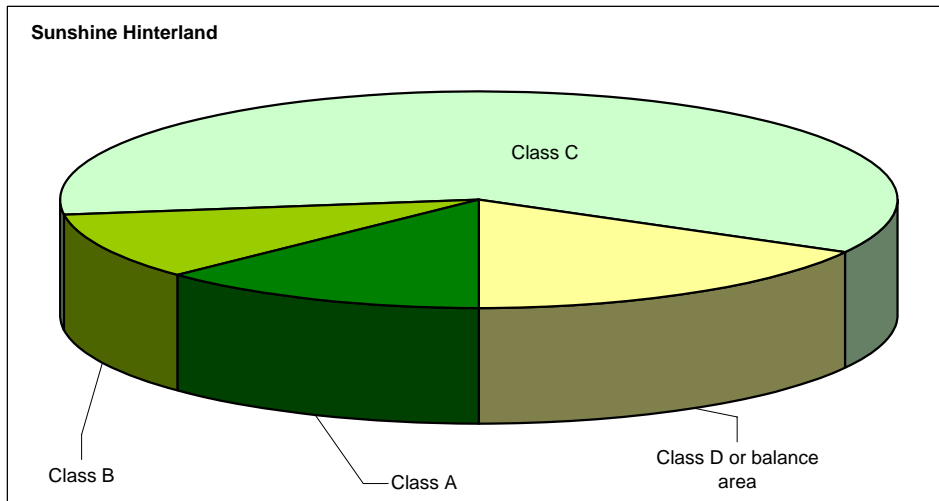
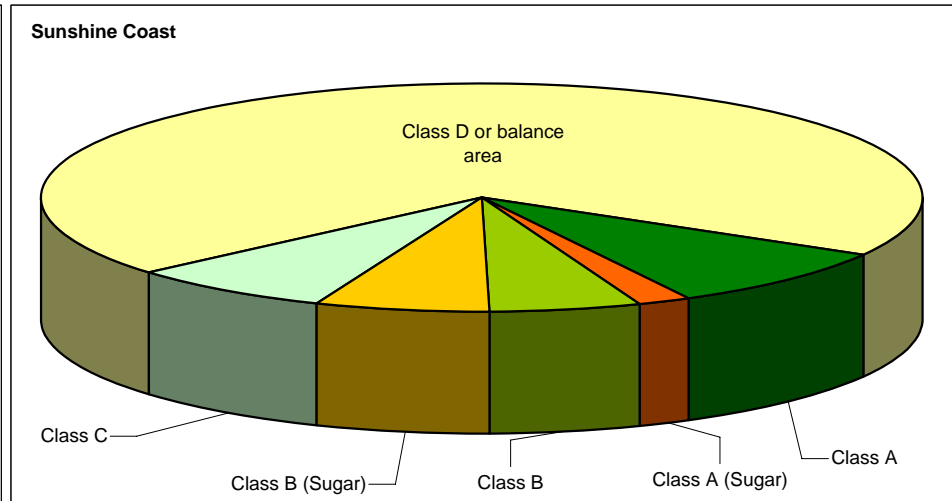
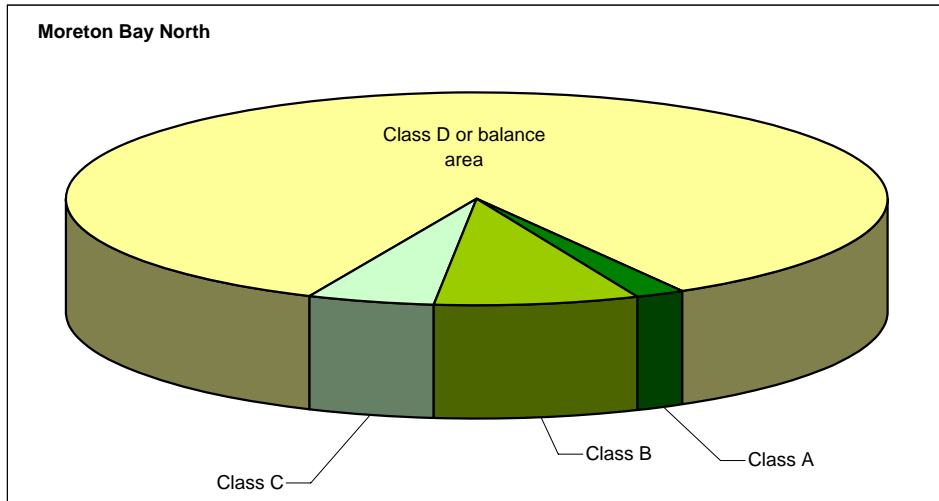
Source: PIFU supplied data (11/2003)



CATCHMENT	Class A (ha.)	Class A (%)	Class AS (ha.)	Class AS (%)	Class B (ha.)	Class B (%)	Class BS (ha.)	Class BS (%)	Class C (ha.)	Class C (%)	Class D or balance area (ha.)	Class D or balance area (%)	TOTAL
Brisbane River	243	0.7%	0	0.0%	292	0.9%	0	0.0%	1,578	4.8%	31,064	93.8%	33,177
Cabooteure River	2,092	4.4%	0	0.0%	3,376	7.2%	0	0.0%	3,819	8.1%	37,864	80.3%	47,151
Maroochy River	2,455	4.0%	5,907	9.6%	12,410	20.1%	6,365	10.3%	15,683	25.4%	18,891	30.6%	61,711
Mary River	12,857	8.3%	0	0.0%	9,102	5.9%	0	0.0%	41,468	26.7%	92,054	59.2%	155,481
Mooloolah River	4,763	24.1%	528	2.7%	560	2.8%	637	3.2%	2,030	10.3%	11,206	56.8%	19,724
Moreton Bay	0	0.0%	0	0.0%	0	0.0%	0	0.0%	0	0.0%	3,607	100.0%	3,607
Noosa River	3,428	6.2%	0	0.0%	1,518	2.7%	13,296	24.1%	2,572	4.7%	34,433	62.3%	55,247
Pacific Ocean	0	0.0%	0	0.0%	262	5.0%	0	0.0%	0	0.0%	4,953	95.0%	5,215
Pine Rivers	18	0.0%	0	0.0%	8,372	11.4%	0	0.0%	3,309	4.5%	61,555	84.0%	73,253
Pumicestone Passage	18,583	25.3%	0	0.0%	4,840	6.6%	0	0.0%	4,011	5.5%	45,968	62.6%	73,403
Stanley River	9,041	7.0%	0	0.0%	7,887	6.1%	0	0.0%	60,734	47.0%	51,656	39.9%	129,319
Stumer Creek	0	0.0%	0	0.0%	0	0.0%	0	0.0%	33	2.6%	1,260	97.4%	1,293
NORSROC	53,480	8.1%	6,435	1.0%	48,619	7.4%	20,299	3.1%	135,237	20.5%	394,511	59.9%	658,581



COMMUNITY OF INTEREST	Class A		Class A (Sugar)		Class B		Class B (Sugar)		Class C		Class D or balance area		TOTAL	
	Hectare	%	Hectare	%	Hectare	%	Hectare	%	Hectare	%	Hectare	%	Hectare	%
Moreton Bay North	3,282	1.9%	0	0.0%	13,685	8.1%	0	0.0%	8,225	4.9%	143,244	85.0%	168,435	25.6%
Sunshine Coast	28,225	8.9%	6,435	2.0%	17,770	5.6%	20,332	6.4%	23,390	7.4%	221,724	69.8%	317,876	48.3%
Sunshine Hinterland	21,973	12.8%	0	0.0%	17,163	10.0%	0	0.0%	103,784	60.2%	29,372	17.0%	172,293	26.2%
NORSROC	53,480	8.1%	6,435	1.0%	48,619	7.4%	20,332	3.1%	135,399	20.6%	394,340	59.9%	658,604	100.0%



**NORSROC SUB-REGIONAL FRAMEWORK: Statistical Analysis
Centres by LGA & Name**

77/8

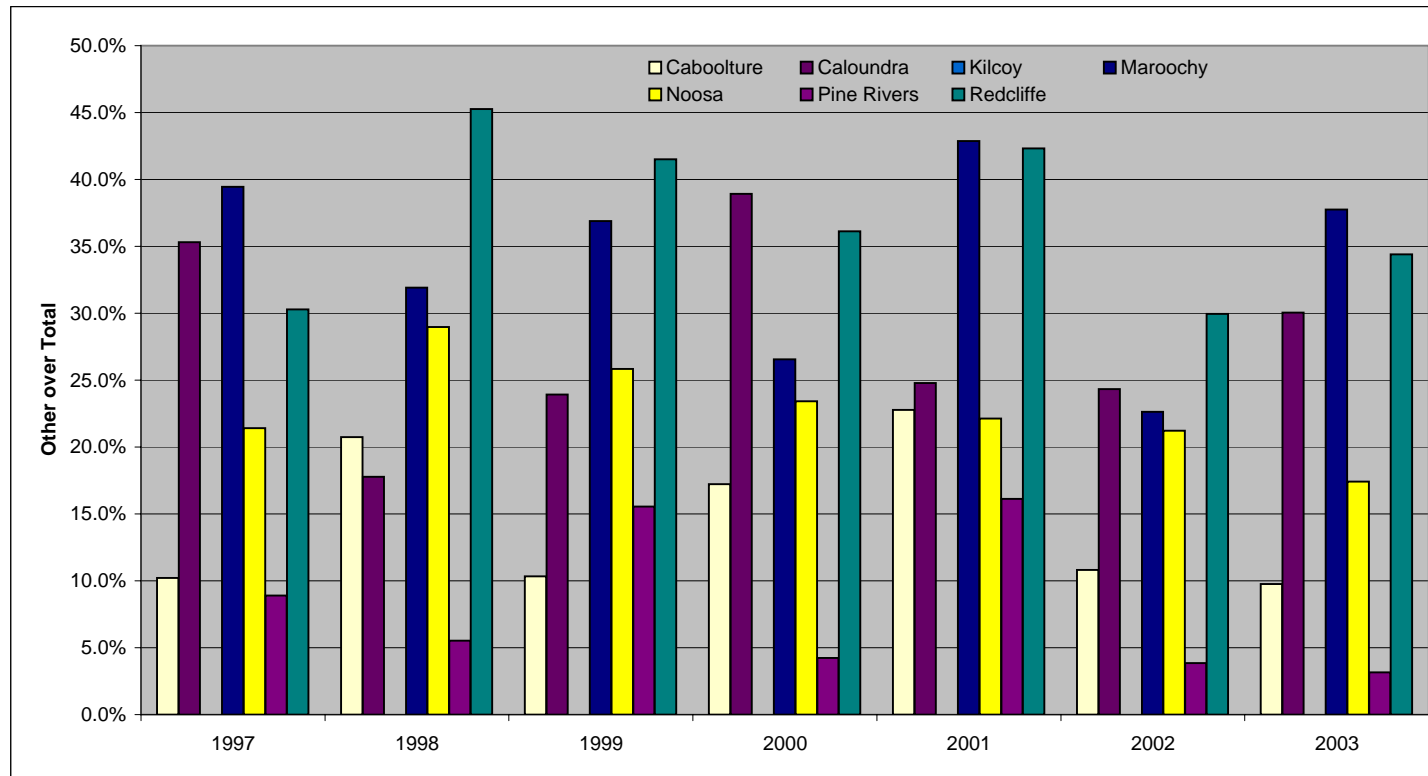
LGA	Name	Community of Interest	Key Functions	Overall Network Function
Caboolture	Bellara	Moreton Bay North	Multiple urban functions and coastal recreation	Multiple focus centre
Caboolture	Burpengary	Moreton Bay North	Multiple urban functions	Multiple focus centre
Caboolture	Caboolture/Morayfield	Moreton Bay North	Multiple urban functions and airport	Major activity centre
Caboolture	Deception Bay	Moreton Bay North	Retail	Single focus centre
Caboolture	Narangba	Moreton Bay North	Multiple urban functions	Multiple focus centre
Caboolture	Woodford	Sunshine Hinterland	Multiple urban/rural functions	Multiple focus centre
Caloundra	Beerwah	Sunshine Coast	Multiple urban/rural functions	Multiple focus centre
Caloundra	Caloundra	Sunshine Coast	Multiple urban functions and airport	Major activity centre
Caloundra	Corbould Park	Sunshine Coast	Racetrack and enterprise (emerging)	Multiple focus centre
Caloundra	Kawana	Sunshine Coast	Multiple urban functions and enterprise (emerging)	Major activity centre
Caloundra	Maleny	Sunshine Hinterland	Multiple urban/rural functions, inc. rural recreation	Multiple focus centre
Kilcoy	Kilcoy	Sunshine Hinterland	Multiple urban/rural functions	Multiple focus centre
Maroochy	Buderim	Sunshine Coast	Multiple urban functions	Multiple focus centre
Maroochy	Coolum Beach	Sunshine Coast	Multiple urban functions inc. enterprise (emerging)	Multiple focus centre
Maroochy	Maroochy Airport	Sunshine Coast	Airport and enterprise (emerging)	Multiple focus centre
Maroochy	Maroochydhore	Sunshine Coast	Multiple urban functions inc. coastal recreation	Major activity centre
Maroochy	Nambour	Sunshine Coast	Multiple urban/rural functions	Major activity centre
Maroochy	Sippy Downs	Sunshine Coast	Learning and enterprise	Major activity centre
Maroochy	Yandina	Sunshine Coast	Multiple urban functions and enterprise (emerging)	Multiple focus centre
Noosa	Cooroy	Sunshine Hinterland	Multiple urban/rural functions	Multiple focus centre
Noosa	Noosa Heads	Sunshine Coast	Multiple urban functions inc. coastal recreation	Multiple focus centre
Noosa	Noosaville	Sunshine Coast	Multiple urban functions inc. enterprise (emerging)	Major activity centre
Noosa	Tewantin	Sunshine Coast	Multiple urban/rural functions	Multiple focus centre
Pine Rivers	Albany Creek	Moreton Bay North	Multiple urban functions	Multiple focus centre
Pine Rivers	Arana Hills	Moreton Bay North	Multiple urban functions	Multiple focus centre
Pine Rivers	Kallangur	Moreton Bay North	Multiple urban functions	Multiple focus centre
Pine Rivers	Mango Hill (North Lakes)	Moreton Bay North	Multiple urban functions inc. enterprise (emerging)	Major activity centre
Pine Rivers	Petrie	Moreton Bay North	Multiple urban functions	Multiple focus centre
Pine Rivers	Strathpine/Brendale	Moreton Bay North	Multiple urban functions inc. enterprise	Major activity centre
Pine Rivers	Warner	Moreton Bay North	Retail	Single focus centre
Redcliffe	Kippa-Ring/Redcliffe	Moreton Bay North	Multiple urban functions	Major activity centre
Redcliffe	Rothwell	Moreton Bay North	Retail and enterprise (emerging)	Multiple focus centre

**NORSROC SUB-REGIONAL FRAMEWORK: Statistical Analysis
Centres by Function & Col**

LGA	Name	Community of Interest	Key Functions	Overall Network Function
Caboolture	Caboolture/Morayfield	Moreton Bay North	Multiple urban functions and airport	Major activity centre
Pine Rivers	Mango Hill (North Lakes)	Moreton Bay North	Multiple urban functions inc. enterprise (emerging)	Major activity centre
Pine Rivers	Strathpine/Brendale	Moreton Bay North	Multiple urban functions inc. enterprise	Major activity centre
Redcliffe	Kippa-Ring/Redcliffe	Moreton Bay North	Multiple urban functions	Major activity centre
Caloundra	Caloundra	Sunshine Coast	Multiple urban functions and airport	Major activity centre
Caloundra	Kawana	Sunshine Coast	Multiple urban functions and enterprise (emerging)	Major activity centre
Maroochy	Maroochydhore	Sunshine Coast	Multiple urban functions inc. coastal recreation	Major activity centre
Maroochy	Nambour	Sunshine Coast	Multiple urban/rural functions	Major activity centre
Maroochy	Sippy Downs	Sunshine Coast	Learning and enterprise	Major activity centre
Noosa	Noosaville	Sunshine Coast	Multiple urban functions inc. enterprise (emerging)	Major activity centre
Caboolture	Burpengary	Moreton Bay North	Multiple urban functions	Multiple focus centre
Caboolture	Narangba	Moreton Bay North	Multiple urban functions	Multiple focus centre
Caboolture	Bellara	Moreton Bay North	Multiple urban functions and coastal recreation	Multiple focus centre
Pine Rivers	Albany Creek	Moreton Bay North	Multiple urban functions	Multiple focus centre
Pine Rivers	Arana Hills	Moreton Bay North	Multiple urban functions	Multiple focus centre
Pine Rivers	Kallangur	Moreton Bay North	Multiple urban functions	Multiple focus centre
Pine Rivers	Petrie	Moreton Bay North	Multiple urban functions	Multiple focus centre
Redcliffe	Rothwell	Moreton Bay North	Retail and enterprise (emerging)	Multiple focus centre
Caloundra	Beerwah	Sunshine Coast	Multiple urban/rural functions	Multiple focus centre
Caloundra	Corbould Park	Sunshine Coast	Racetrack and enterprise (emerging)	Multiple focus centre
Maroochy	Buderim	Sunshine Coast	Multiple urban functions	Multiple focus centre
Maroochy	Coolum Beach	Sunshine Coast	Multiple urban functions inc. enterprise (emerging)	Multiple focus centre
Maroochy	Maroochy Airport	Sunshine Coast	Airport and enterprise (emerging)	Multiple focus centre
Maroochy	Yandina	Sunshine Coast	Multiple urban functions and enterprise (emerging)	Multiple focus centre
Noosa	Noosa Heads	Sunshine Coast	Multiple urban functions inc. coastal recreation	Multiple focus centre
Noosa	Tewantin	Sunshine Coast	Multiple urban/rural functions	Multiple focus centre
Caboolture	Woodford	Sunshine Hinterland	Multiple urban/rural functions	Multiple focus centre
Caloundra	Maleny	Sunshine Hinterland	Multiple urban/rural functions, inc. rural recreation	Multiple focus centre
Kilcoy	Kilcoy	Sunshine Hinterland	Multiple urban/rural functions	Multiple focus centre
Noosa	Cooroy	Sunshine Hinterland	Multiple urban/rural functions	Multiple focus centre
Caboolture	Deception Bay	Moreton Bay North	Retail	Single focus centre
Pine Rivers	Warner	Moreton Bay North	Retail	Single focus centre

Year	Caboolture			Caloundra			Kilcoy			Maroochy			Noosa			Pine Rivers			Redcliffe		
	Houses	Other	Other over Total	Houses	Other	Other over Total	Houses	Other	Other over Total	Houses	Other	Other over Total	Houses	Other	Other over Total	Houses	Other	Other over Total	Houses	Other	Other over Total
1997	1,117	127	10.2%	553	302	35.3%	11	0	0.0%	1,194	778	39.5%	635	173	21.4%	1,115	109	8.9%	168	73	30.3%
1998	1,250	327	20.7%	698	151	17.8%	12	0	0.0%	1,158	543	31.9%	669	273	29.0%	1,164	68	5.5%	110	91	45.3%
1999	685	79	10.3%	658	207	23.9%	3	0	0.0%	1,067	624	36.9%	629	219	25.8%	836	154	15.6%	179	127	41.5%
2000	538	112	17.2%	789	503	38.9%	22	0	0.0%	1,245	450	26.5%	605	185	23.4%	858	38	4.2%	237	134	36.1%
2001	329	97	22.8%	516	170	24.8%	0	0	0.0%	782	587	42.9%	331	94	22.1%	1,114	214	16.1%	199	146	42.3%
2002	833	101	10.8%	1,088	350	24.3%	19	0	0.0%	1,149	336	22.6%	501	135	21.2%	1,726	69	3.8%	297	127	30.0%
2003	1,931	209	9.8%	1,250	537	30.1%	6	0	0.0%	1,604	973	37.8%	555	117	17.4%	1,135	37	3.2%	307	161	34.4%

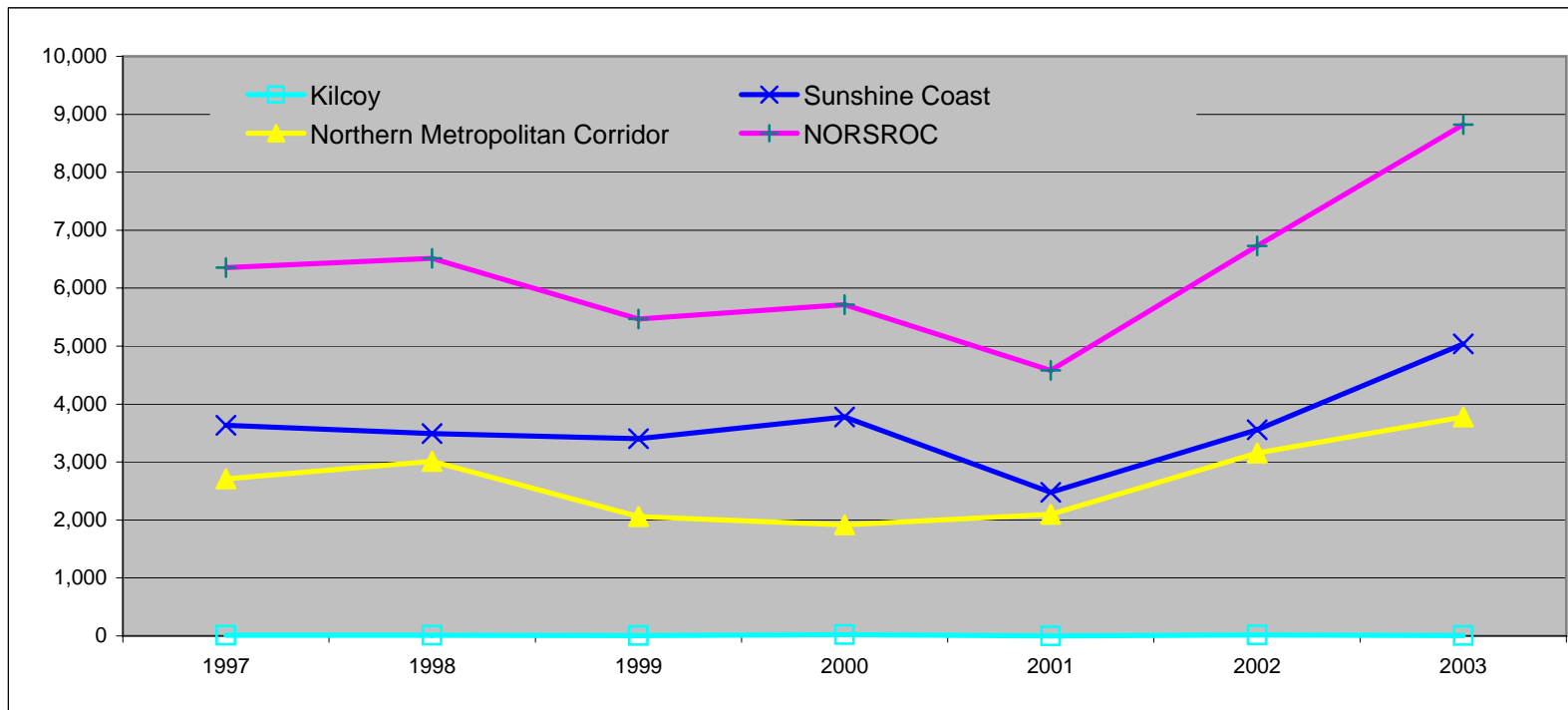
Source: Compilation of data from PIFU web page



NORSROC SUB-REGIONAL FRAMEWORK: Statistical Analysis
Dwelling Approvals x SSR

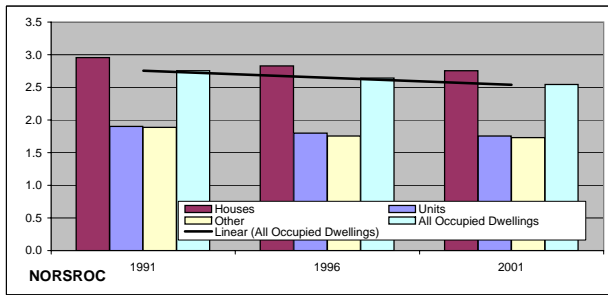
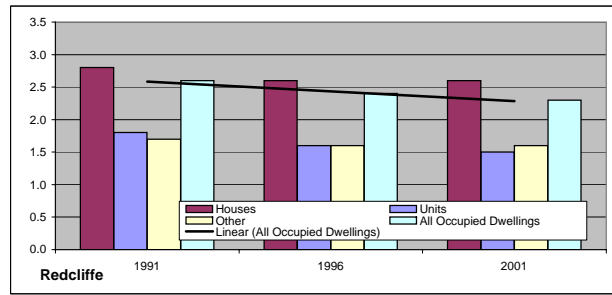
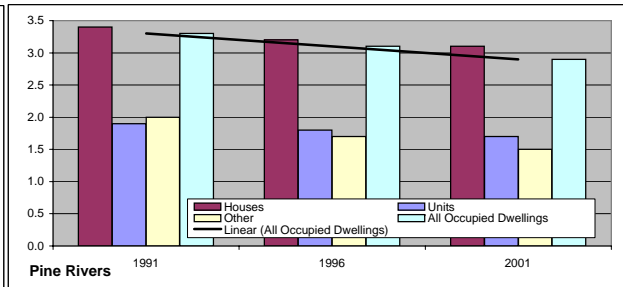
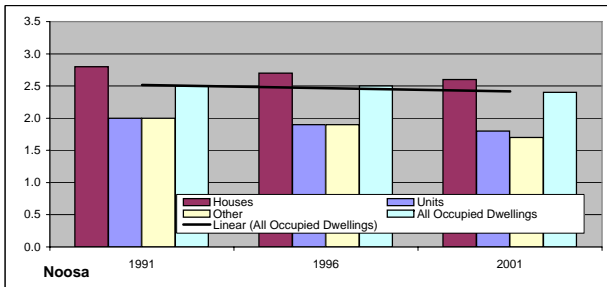
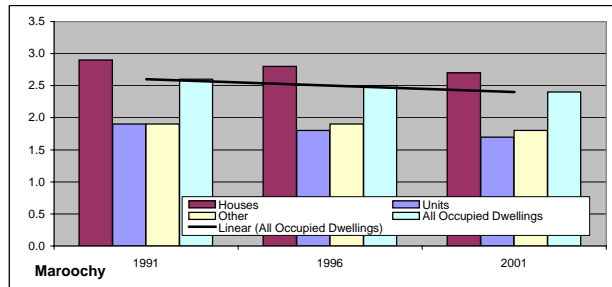
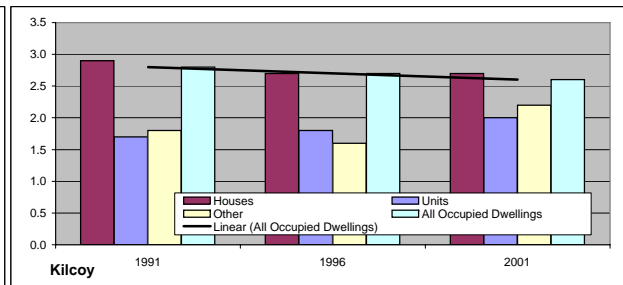
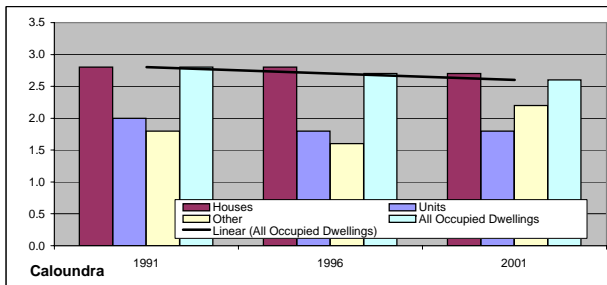
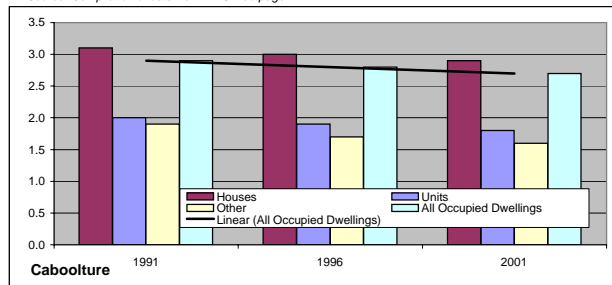
YEAR	Kilcoy		Sunshine Coast		Northern Metropolitan		NORSROC	
	All Dwellings	Rate	All Dwellings	Rate	All Dwellings	Rate	All Dwellings	Rate
1997	11		3,635		2,709		6,355	
1998	12	1.7%	3,492	-0.8%	3,010	2.1%	6,514	0.5%
1999	3	-27.7%	3,404	-0.5%	2,060	-7.6%	5,467	-3.5%
2000	22	39.8%	3,777	2.1%	1,917	-1.4%	5,716	0.9%
2001	0		2,480	-8.4%	2,099	1.8%	4,579	-4.4%
2002	19		3,559	-1.2%	3,153	8.1%	6,731	3.3%
2003	6	-23.1%	5,036	6.9%	3,780	3.6%	8,822	5.4%

Source: Compilation of data from PIFU web page



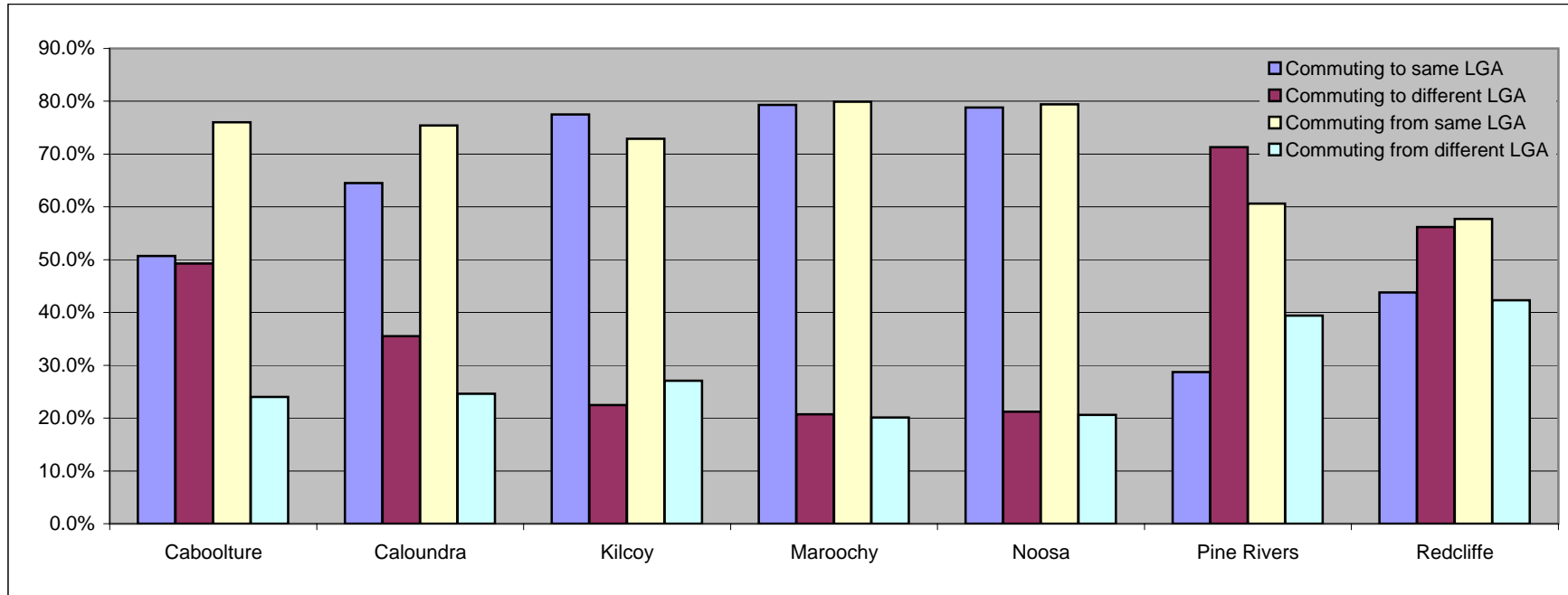
YEAR	Caboolture	Caloundra	Kilcoy	Maroochy	Noosa	Pine Rivers	Redcliffe	NORSROC	Queensland
1991									
Houses	3.1	2.8	2.9	2.9	2.8	3.4	2.8	3.0	
Units	2.0	2.0	1.7	1.9	2.0	1.9	1.8	1.9	
Other	1.9	1.9	1.8	1.9	2.0	2.0	1.7	1.9	
All Occupied Dwellings	2.9	2.6	2.8	2.6	2.5	3.3	2.6	2.8	
1996									
Houses	3.0	2.8	2.7	2.8	2.7	3.2	2.6	2.8	2.9
Units	1.9	1.8	1.8	1.8	1.9	1.8	1.6	1.8	1.8
Other	1.7	1.9	1.6	1.9	1.9	1.7	1.6	1.8	1.9
All Occupied Dwellings	2.8	2.5	2.7	2.5	2.5	3.1	2.4	2.6	2.7
2001									
Houses	2.9	2.7	2.7	2.7	2.6	3.1	2.6	2.8	2.8
Units	1.8	1.8	2.0	1.7	1.8	1.7	1.5	1.8	1.8
Other	1.6	1.7	2.2	1.8	1.7	1.5	1.6	1.7	1.8
All Occupied Dwellings	2.7	2.5	2.6	2.4	2.4	2.9	2.3	2.5	2.6

Source: Compilation of data from PIFU web page



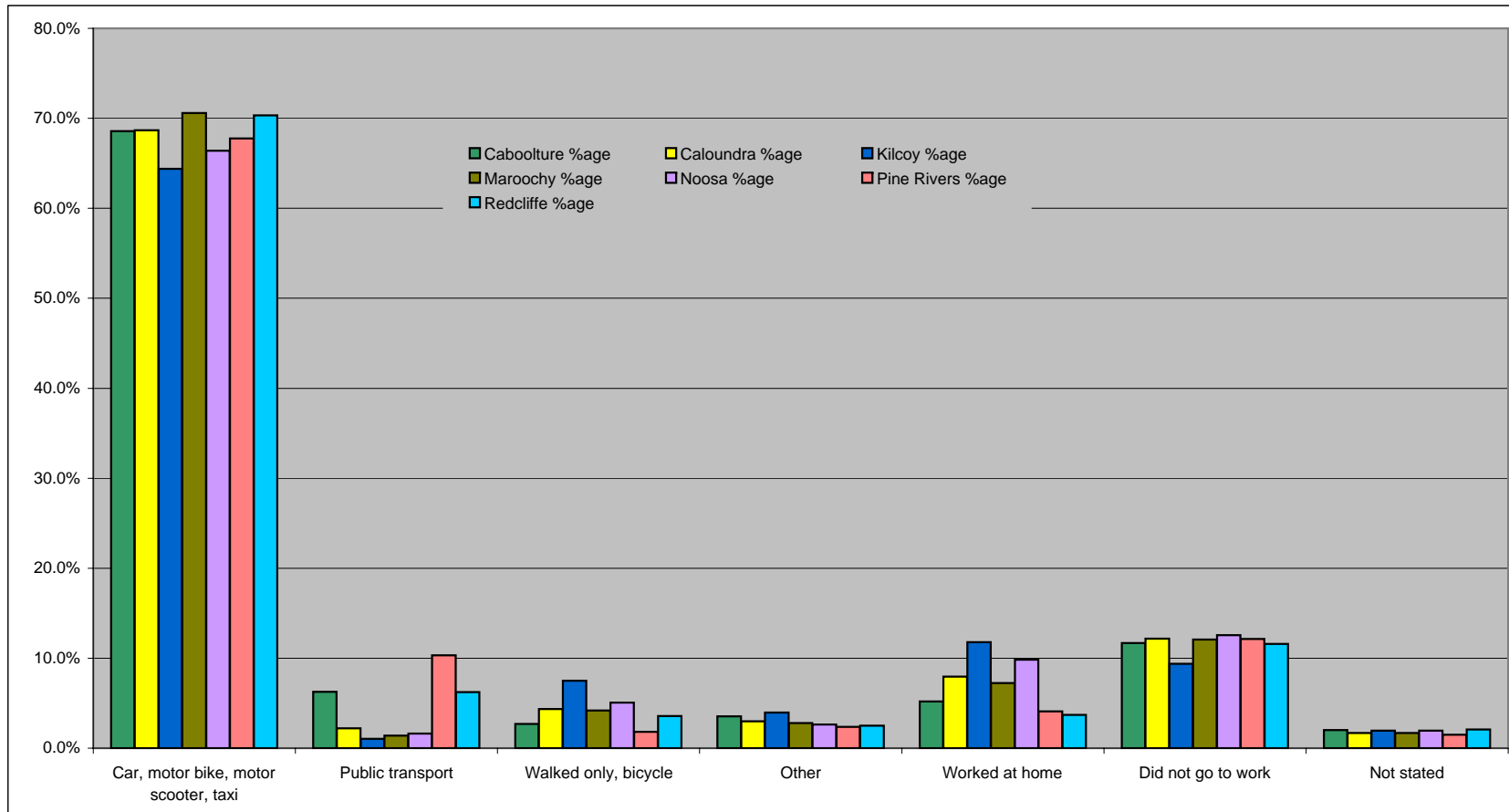
LGA	LGA AS ORIGIN		LGA AS DESTINATION	
	Commuting to same LGA	Commuting to different LGA	Commuting from same LGA	Commuting from different LGA
Caboolture	50.7%	49.3%	76.0%	24.0%
Caloundra	64.5%	35.5%	75.4%	24.6%
Kilcoy	77.5%	22.5%	72.9%	27.1%
Maroochy	79.3%	20.7%	79.9%	20.1%
Noosa	78.8%	21.2%	79.4%	20.6%
Pine Rivers	28.7%	71.3%	60.6%	39.4%
Redcliffe	43.8%	56.2%	57.7%	42.3%

Source: Compilation of data from OESR Census 2001 Bulletin No. 9 (Dec 2003)



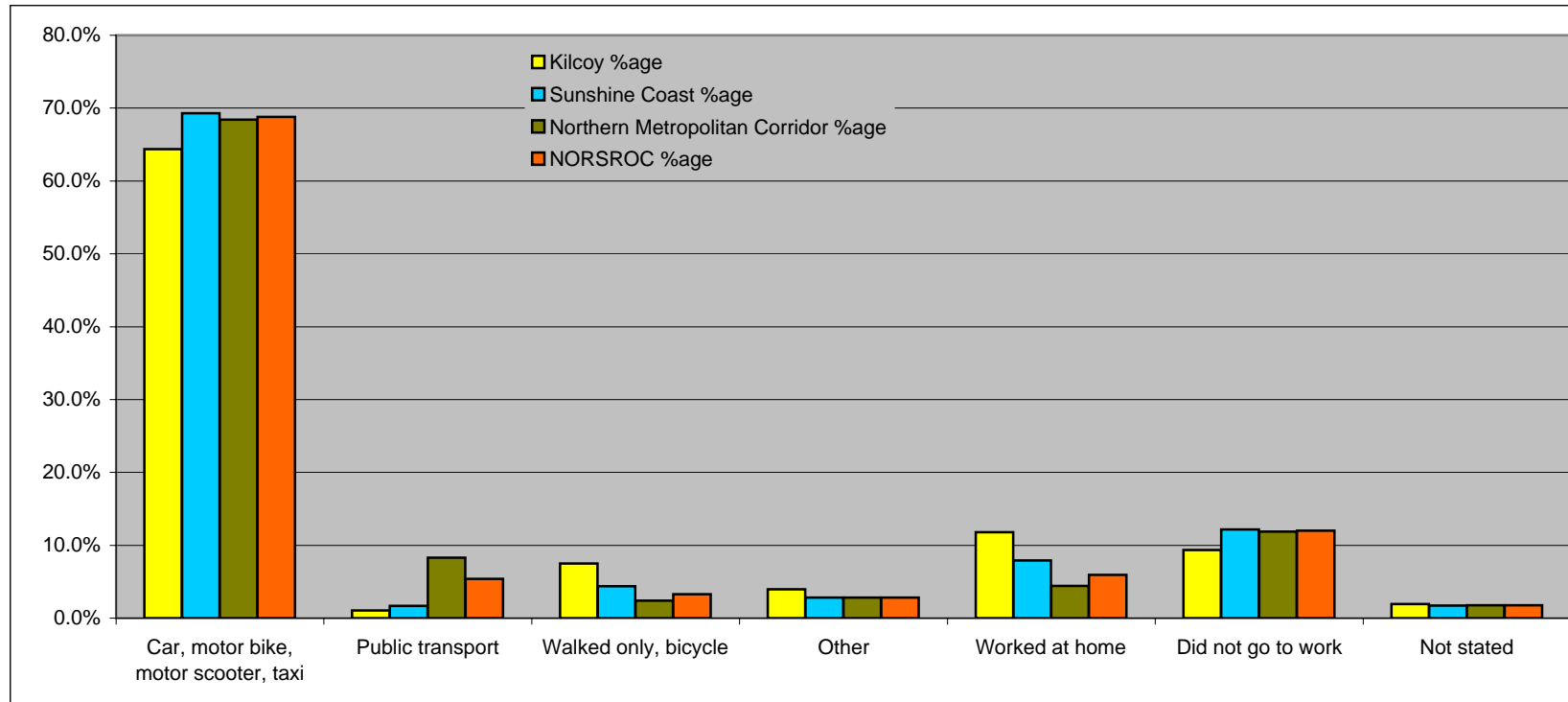
METHOD	Caboolture		Caloundra		Kilcoy		Maroochy		Noosa		Pine Rivers		Redcliffe	
	Journeys	%age	Journeys	%age	Journeys	%age	Journeys	%age	Journeys	%age	Journeys	%age	Journeys	%age
Car, motor bike, motor scooter, taxi	28,533	68.6%	18,305	68.7%	797	64.4%	34,262	70.6%	10,580	66.4%	40,340	67.8%	12,842	70.3%
Public transport	2,605	6.3%	585	2.2%	13	1.1%	678	1.4%	256	1.6%	6,152	10.3%	1,135	6.2%
Walked only, bicycle	1,127	2.7%	1,158	4.3%	93	7.5%	2,030	4.2%	808	5.1%	1,085	1.8%	653	3.6%
Other	1,478	3.6%	794	3.0%	49	4.0%	1,359	2.8%	418	2.6%	1,413	2.4%	456	2.5%
Worked at home	2,167	5.2%	2,117	7.9%	146	11.8%	3,517	7.2%	1,565	9.8%	2,436	4.1%	675	3.7%
Did not go to work	4,862	11.7%	3,245	12.2%	116	9.4%	5,858	12.1%	1,999	12.5%	7,231	12.1%	2,114	11.6%
Not stated	841	2.0%	454	1.7%	24	1.9%	826	1.7%	308	1.9%	881	1.5%	381	2.1%
Total	41,613	100.0%	26,658	100.0%	1,238	100.0%	48,530	100.0%	15,934	100.0%	59,538	100.0%	18,256	100.0%

Source: Compilation of data from OESR Census 2001 Bulletin No. 9 (Dec 2003)



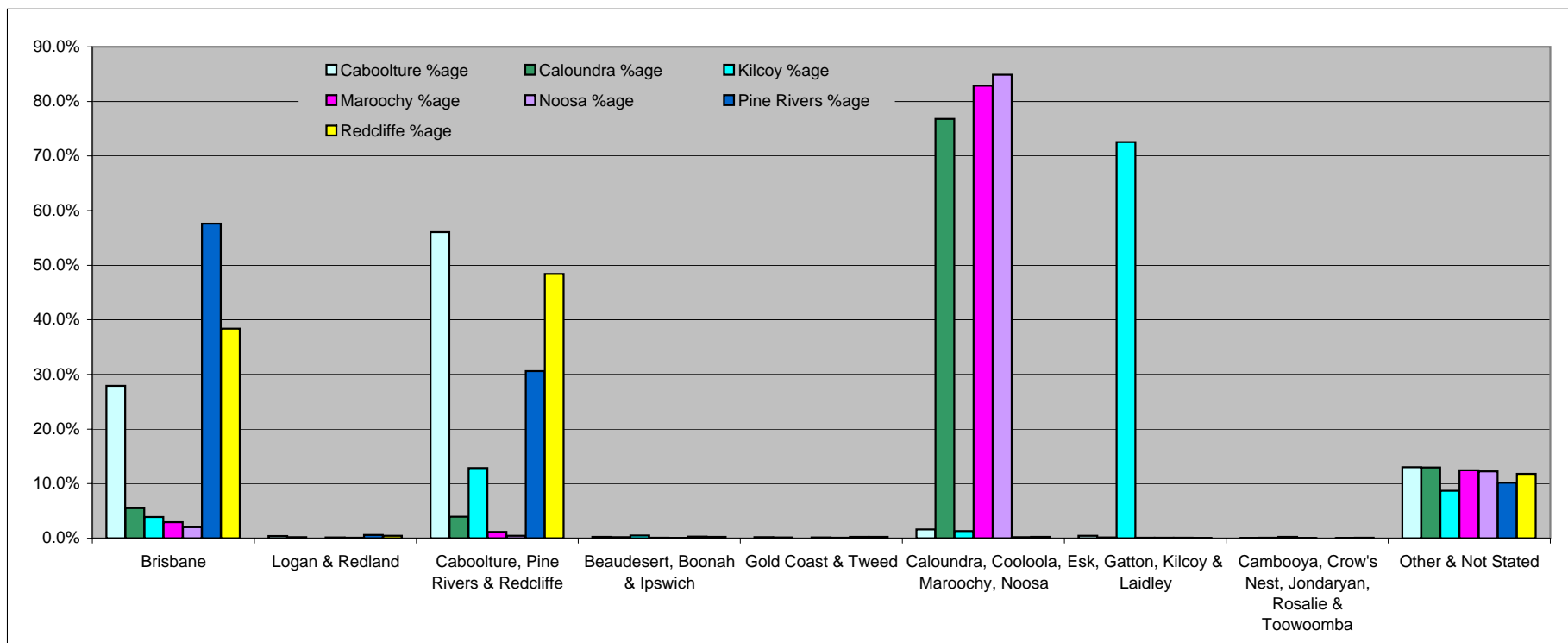
Method	Kilcoy		Sunshine Coast		Northern Metropolitan		NORSROC	
	Journeys	%age	Journeys	%age	Journeys	%age	Journeys	%age
Car, motor bike, motor scooter, taxi	797	64.4%	63,147	69.3%	81,715	68.4%	145,661	68.8%
Public transport	13	1.1%	1,519	1.7%	9,892	8.3%	11,424	5.4%
Walked only, bicycle	93	7.5%	3,996	4.4%	2,865	2.4%	6,954	3.3%
Other	49	4.0%	2,571	2.8%	3,347	2.8%	5,967	2.8%
Worked at home	146	11.8%	7,199	7.9%	5,278	4.4%	12,623	6.0%
Did not go to work	116	9.4%	11,102	12.2%	14,207	11.9%	25,425	12.0%
Not stated	24	1.9%	1,588	1.7%	2,103	1.8%	3,715	1.8%
Total	1,238	100.0%	91,122	100.0%	119,407	100.0%	211,770	100.0%

Source: Compilation of data from OESR Census 2001 Bulletin No. 9 (Dec 2003)



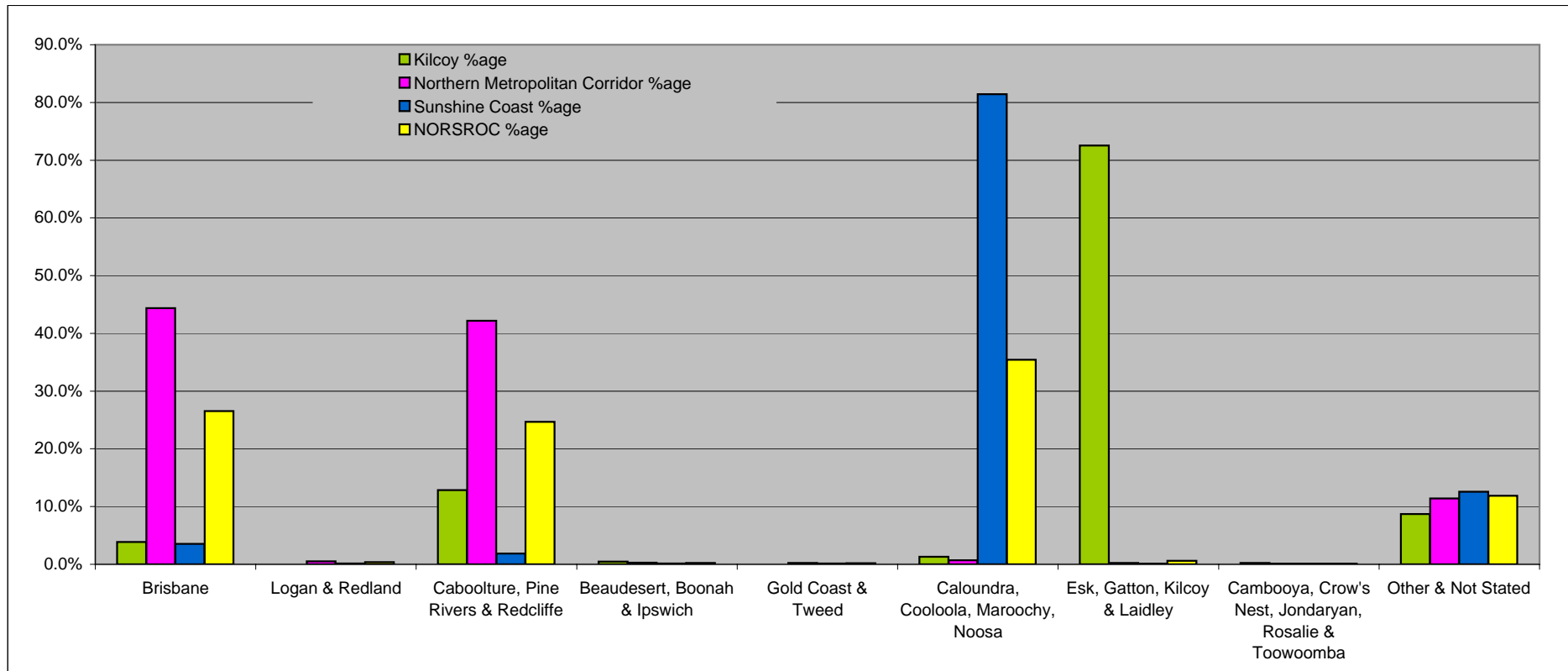
Destinations	Caboolture		Caloundra		Kilcoy		Maroochy		Noosa		Pine Rivers		Redcliffe	
	Journeys	%age	Journeys	%age	Journeys	%age	Journeys	%age	Journeys	%age	Journeys	%age	Journeys	%age
Brisbane	11,622	27.9%	1464	5.5%	48	3.9%	1434	3.0%	326	2.0%	34,321	57.6%	7013	38.4%
Logan & Redland	177	0.4%	53	0.2%	0	0.0%	68	0.1%	13	0.1%	366	0.6%	83	0.5%
Caboolture, Pine Rivers & Redcliffe	23,323	56.0%	1049	3.9%	159	12.8%	570	1.2%	69	0.4%	18,214	30.6%	8843	48.4%
Beaudesert, Boonah & Ipswich	107	0.3%	52	0.2%	6	0.5%	50	0.1%	11	0.1%	178	0.3%	42	0.2%
Gold Coast & Tweed	78	0.2%	35	0.1%	0	0.0%	78	0.2%	17	0.1%	164	0.3%	45	0.2%
Caloundra, Cooloola, Maroochy, Noosa	670	1.6%	20471	76.8%	16	1.3%	40218	82.9%	13529	84.9%	130	0.2%	46	0.3%
Esk, Gatton, Kilcoy & Laidley	188	0.5%	45	0.2%	898	72.5%	45	0.1%	16	0.1%	74	0.1%	9	0.0%
Cambooya, Crow's Nest, Jondaryan, Rosalie & Toowoomba	29	0.1%	30	0.1%	3	0.2%	35	0.1%	3	0.0%	41	0.1%	20	0.1%
Other & Not Stated	5,419	13.0%	3459	13.0%	108	8.7%	6032	12.4%	1950	12.2%	6,050	10.2%	2155	11.8%
TOTAL	41,613	100%	26,658	100%	1,238	100%	48,530	100%	15,934	100%	59,538	100%	18,256	100%

Source: Compilation of data from OESR Census 2001 Bulletin No. 9



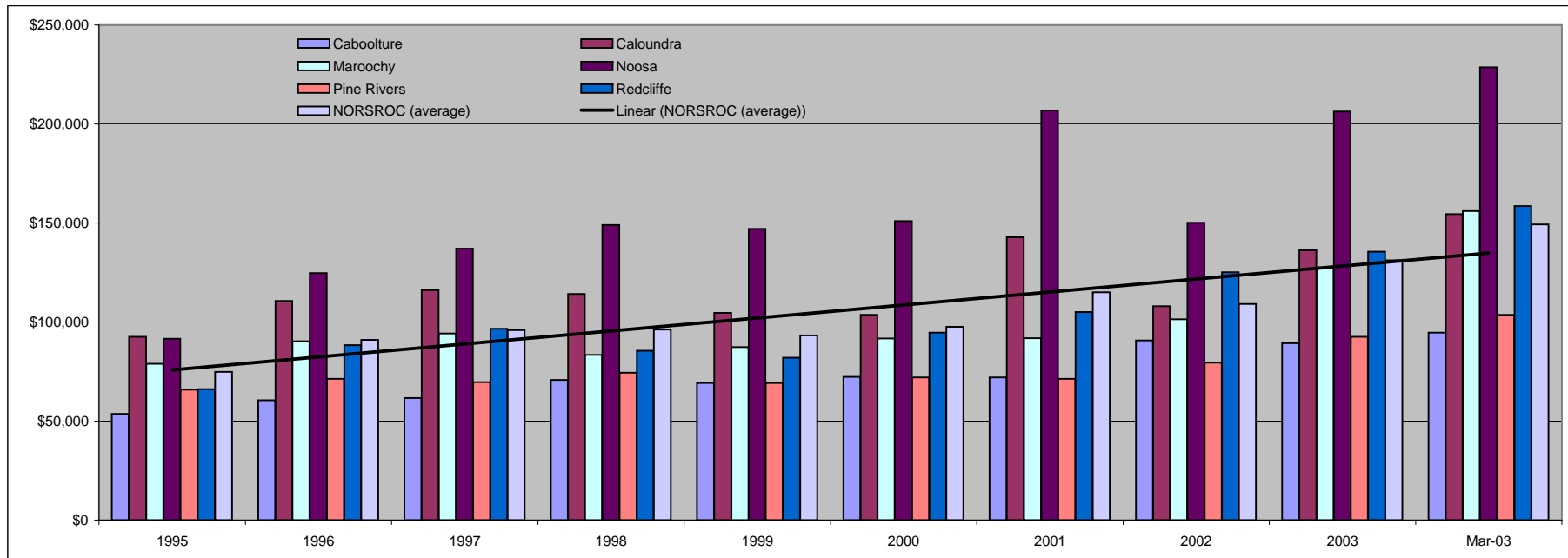
Destinations	Kilcoy		Northern Metropolitan		Sunshine Coast		NORSROC	
	Journeys	%age	Journeys	%age	Journeys	%age	Journeys	%age
Brisbane	48	3.9%	52,956	44.3%	3224	3.5%	56,228	26.6%
Logan & Redland	0	0.0%	626	0.5%	134	0.1%	760	0.4%
Caboolture, Pine Rivers & Redcliffe	159	12.8%	50380	42.2%	1688	1.9%	52,227	24.7%
Beaudesert, Boonah & Ipswich	6	0.5%	327	0.3%	113	0.1%	446	0.2%
Gold Coast & Tweed	0	0.0%	287	0.2%	130	0.1%	417	0.2%
Caloundra, Cooloola, Maroochy, Noosa	16	1.3%	846	0.7%	74218	81.4%	75,080	35.5%
Esk, Gatton, Kilcoy & Laidley	898	72.5%	271	0.2%	106	0.1%	1,275	0.6%
Cambooya, Crow's Nest, Jondaryan, Rosalie & Toowoomba	3	0.2%	90	0.1%	68	0.1%	161	0.1%
Other & Not Stated	108	8.7%	13624	11.4%	11441	12.6%	25,173	11.9%
TOTAL	1,238	100%	119,407	100%	91,122	100%	211,770	100%

Source: Compilation of data from OESR Census 2001 Bulletin No. 9 (Dec 2003)

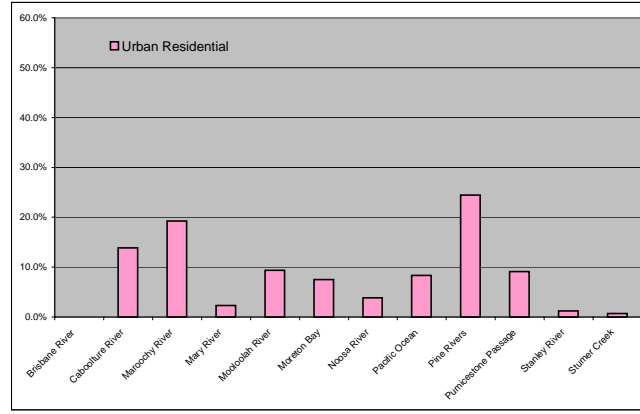
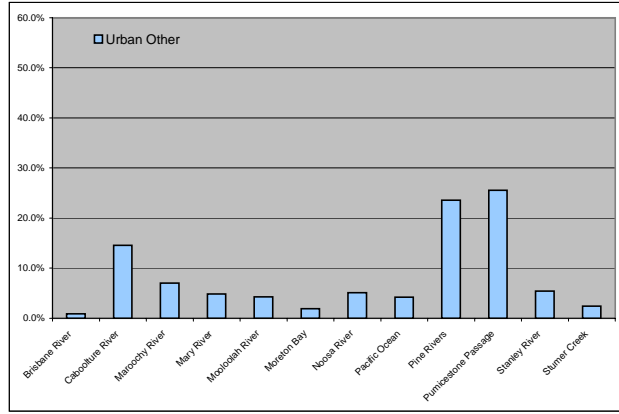
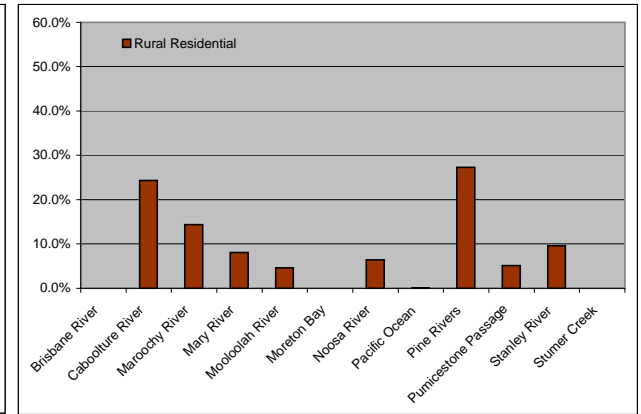
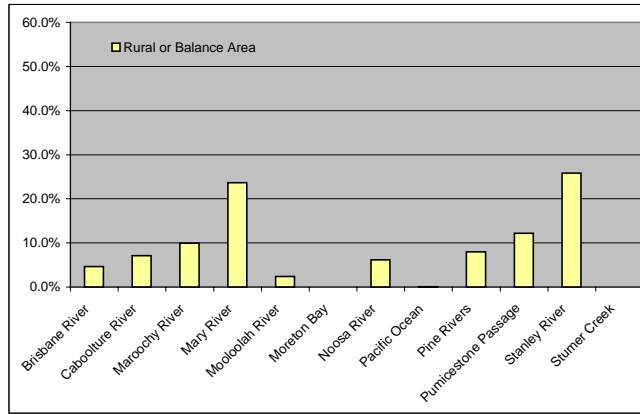
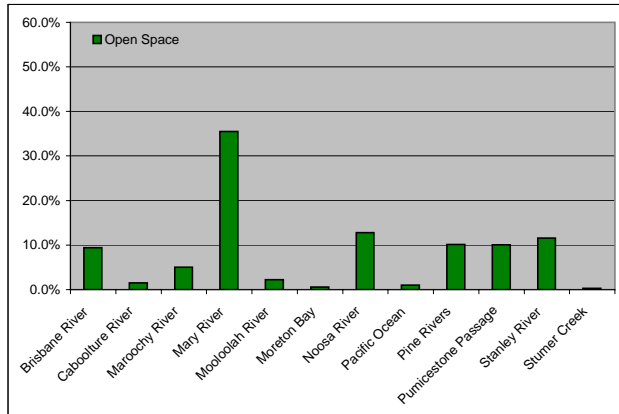


YEAR	Caboolture	%age	Caloundra	%age	Kilcoy	%age	Maroochy	%age	Noosa	%age	Pine Rivers	%age	Redcliffe	%age	NORSROC (average)	%age
1995	\$53,700		\$92,600		NA		\$78,900		\$91,600		\$65,900		\$66,100		\$74,800	
1996	\$60,500	12.7%	\$110,700	19.5%	NA		\$90,300	14.4%	\$124,700	36.1%	\$71,300	8.2%	\$88,400	33.7%	\$90,983	21.6%
1997	\$61,700	2.0%	\$116,100	4.9%	NA		\$94,200	4.3%	\$137,100	9.9%	\$69,700	-2.2%	\$96,600	9.3%	\$95,900	5.4%
1998	\$70,800	14.7%	\$114,200	-1.6%	NA		\$83,400	-11.5%	\$149,000	8.7%	\$74,500	6.9%	\$85,600	-11.4%	\$96,250	0.4%
1999	\$69,200	-2.3%	\$104,600	-8.4%	NA		\$87,400	4.8%	\$147,000	-1.3%	\$69,300	-7.0%	\$82,000	-4.2%	\$93,250	-3.1%
2000	\$72,400	4.6%	\$103,700	-0.9%	NA		\$91,700	4.9%	\$151,000	2.7%	\$72,000	3.9%	\$94,600	15.4%	\$97,567	4.6%
2001	\$72,000	-0.6%	\$142,900	37.8%	NA		\$91,800	0.1%	\$206,900	37.0%	\$71,400	-0.8%	\$105,100	11.1%	\$115,017	17.9%
2002	\$90,800	26.1%	\$108,000	-24.4%	NA		\$101,400	10.5%	\$150,200	-27.4%	\$79,500	11.3%	\$125,100	19.0%	\$109,167	-5.1%
2003	\$89,300	-1.7%	\$136,200	26.1%	NA		\$127,500	25.7%	\$206,300	37.4%	\$92,500	16.4%	\$135,500	8.3%	\$131,217	20.2%
Mar-03	\$94,600	5.9%	\$154,500	13.4%	NA		\$156,000	22.4%	\$228,700	10.9%	\$103,600	12.0%	\$158,600	17.0%	\$149,333	13.8%

Source: Compilation of data from PIFU web page

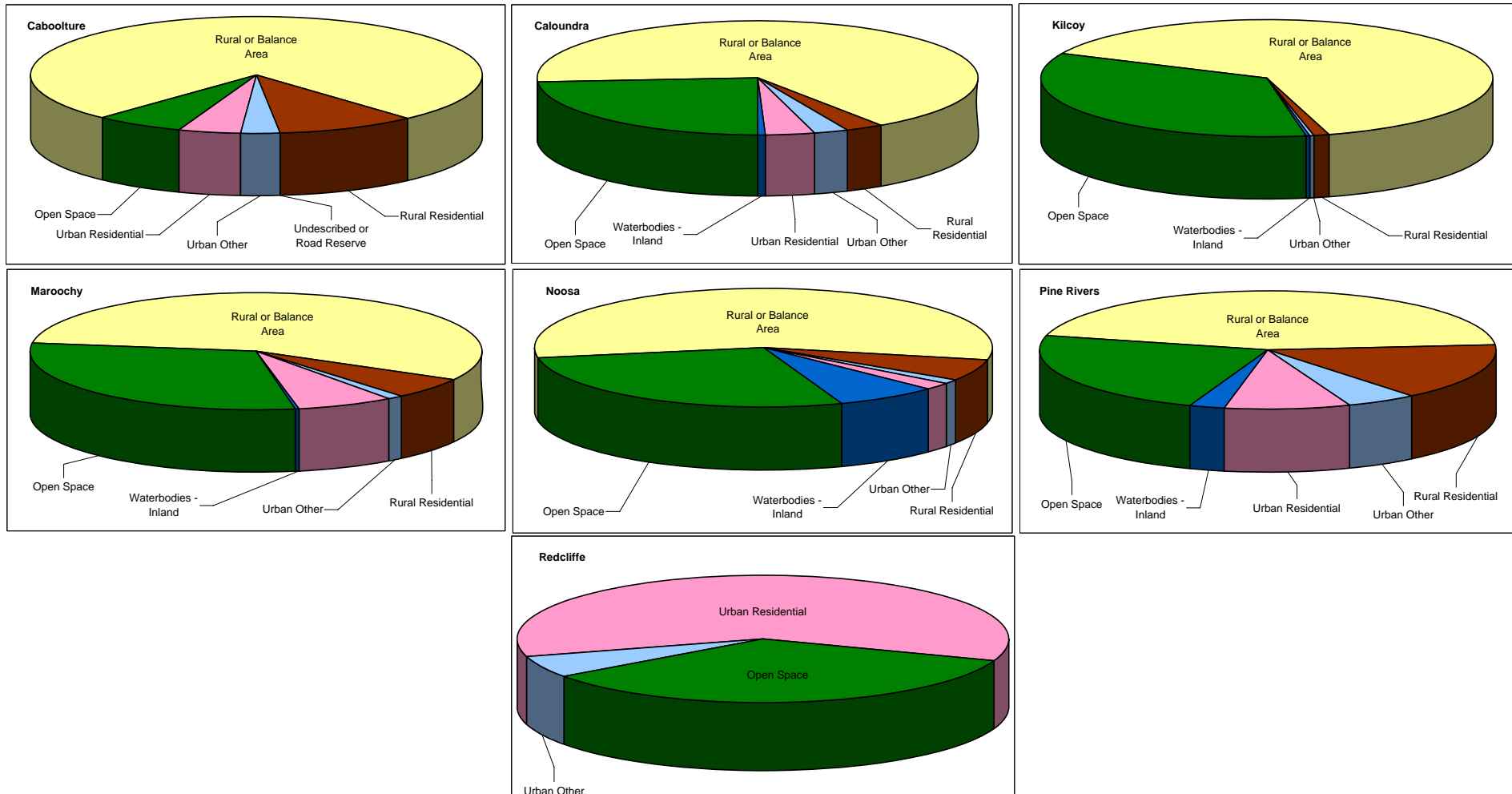


CATCHMENT	Open Space		Rural or Balance Area		Rural Residential		Urban Other		Urban Residential		TOTAL	
	Area (ha.)	Area (%)	Area (ha.)	Area (%)	Area (ha.)	Area (%)	Area (ha.)	Area (%)	Area (ha.)	Area (%)	Area (ha.)	Area (%)
Brisbane River	14,331	9.4%	18,002	4.6%	0	0.0%	104	0.9%	0	0.0%	32,436	5.3%
Caboolture River	2,276	1.5%	27,583	7.1%	9,336	24.3%	1,659	14.6%	3,700	13.9%	44,556	7.2%
Maroochy River	7,659	5.0%	38,525	9.9%	5,519	14.4%	800	7.0%	5,142	19.3%	57,644	9.3%
Mary River	54,189	35.5%	91,694	23.7%	3,099	8.1%	556	4.9%	616	2.3%	150,156	24.3%
Mooloolah River	3,415	2.2%	9,273	2.4%	1,770	4.6%	490	4.3%	2,505	9.4%	17,452	2.8%
Moreton Bay	831	0.5%	0	0.0%	0	0.0%	218	1.9%	2,005	7.5%	3,054	0.5%
Noosa River	19,500	12.8%	23,841	6.1%	2,459	6.4%	579	5.1%	1,024	3.8%	47,404	7.7%
Pacific Ocean	1,565	1.0%	255	0.1%	35	0.1%	482	4.2%	2,223	8.3%	4,560	0.7%
Pine Rivers	15,484	10.1%	31,023	8.0%	10,482	27.3%	2,685	23.6%	6,533	24.5%	66,207	10.7%
Pumicestone Passage	15,374	10.1%	47,135	12.2%	1,979	5.2%	2,909	25.6%	2,439	9.1%	69,837	11.3%
Stanley River	17,727	11.6%	100,225	25.9%	3,688	9.6%	621	5.5%	328	1.2%	122,589	19.9%
Stumer Creek	429	0.3%	111	0.0%	0	0.0%	278	2.4%	189	0.7%	1,009	0.2%
TOTAL	152,779	100.0%	387,668	100.0%	38,367	100.0%	11,381	100.0%	26,704	100.0%	616,905	100.0%



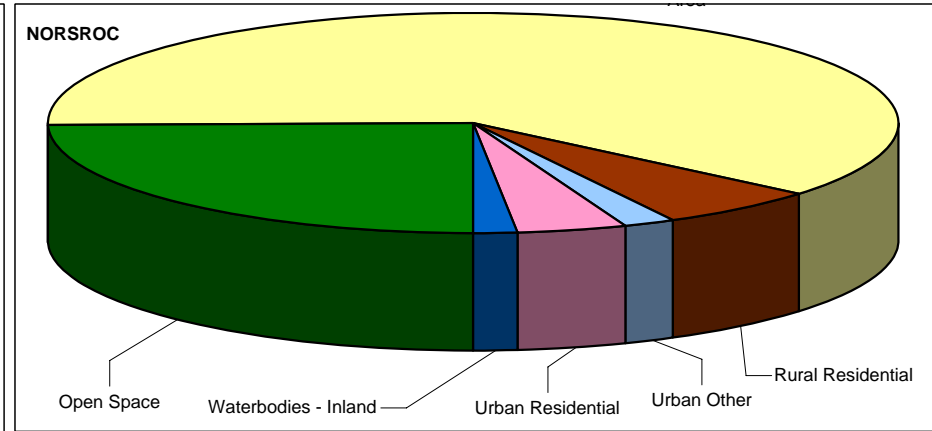
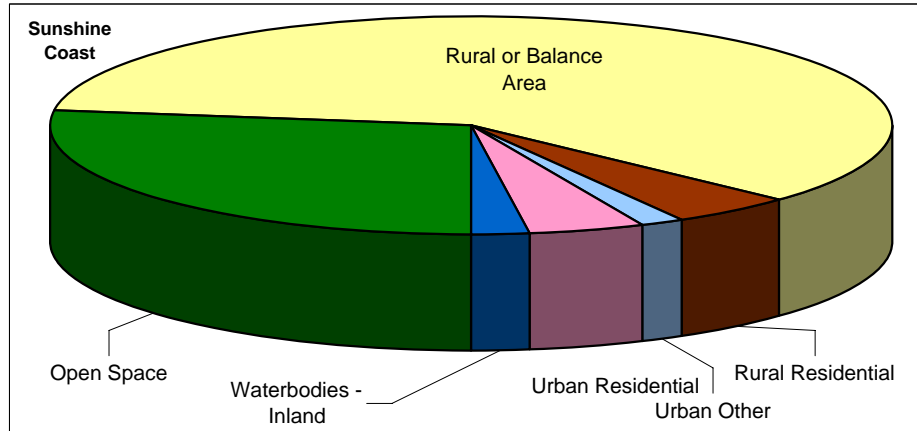
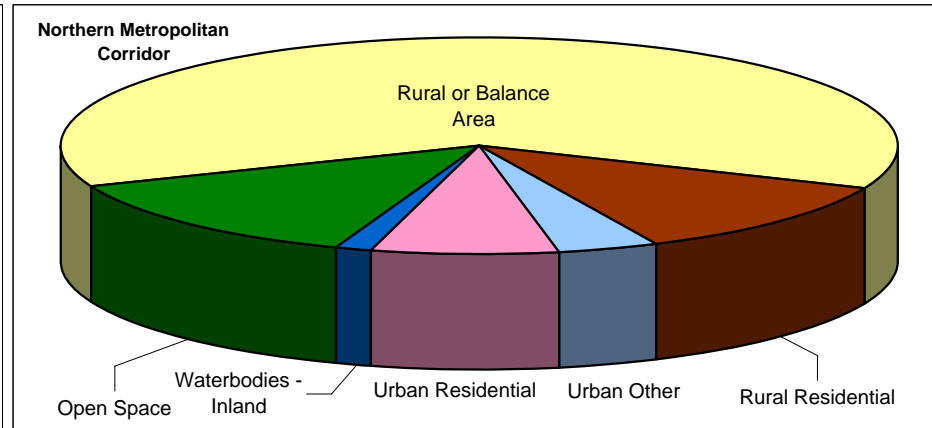
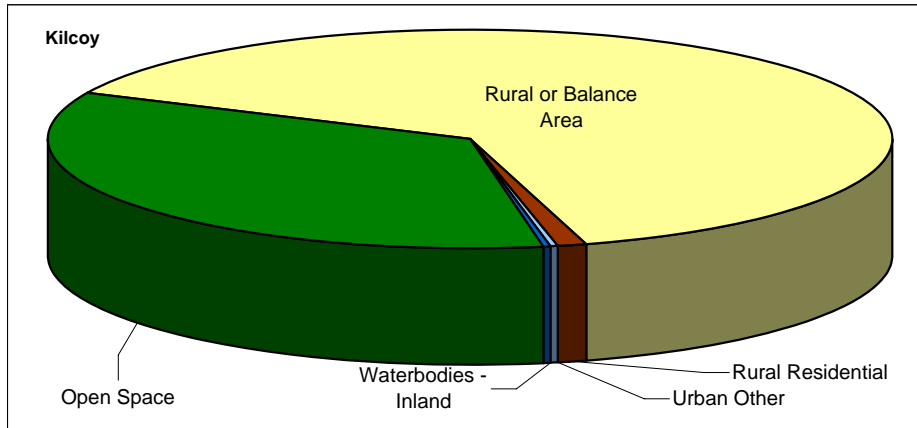
Land Use	Caboolture		Caloundra		Kilcoy		Maroochy		Noosa		Pine Rivers		Redcliffe	
	Area (ha.)	%	Area (ha.)	%	Area (ha.)	%	Area (ha.)	%	Area (ha.)	%	Area (ha.)	%	Area (ha.)	%
Open Space	7,302	6.3%	25,392	23.8%	49,005	34.8%	32,869	30.0%	23,034	27.8%	17,298	23.1%	1,352	34.6%
Rural or Balance Area	88,225	76.5%	71,208	66.7%	89,717	63.6%	61,075	55.8%	46,419	56.1%	32,941	44.0%		
Rural Residential	11,419	9.9%	3,064	2.9%	1,344	1.0%	6,435	5.9%	4,822	5.8%	11,414	15.3%		
Undescribed or Road Reserve	49	0.0%	110	0.1%					26	0.0%				
Urban Other	3,295	2.9%	2,609	2.4%	507	0.4%	1,266	1.2%	999	1.2%	3,659	4.9%	218	5.6%
Urban Residential	5,082	4.4%	3,843	3.6%	190	0.1%	7,503	6.9%	1,559	1.9%	6,535	8.7%	2,342	59.9%
Waterbodies - Inland			541	0.5%	232	0.2%	293	0.3%	5924	7.2%	2962	2.6%		
TOTAL	115,373	100%	106,768	100%	140,995	100%	109,443	100%	82,782	100%	74,809	99%	3,912	100%

Source: Compilation of data from SEQ2021 derived from Local Governments' IPA planning schemes



Land Use	Kilcoy		Northern		Sunshine Coast		NORSROC	
	Area (ha.)	%	Area (ha.)	%	Area (ha.)	%	Area (ha.)	%
Open Space	49,005	34.8%	25,952	13.4%	81,295	27.2%	156,253	24.6%
Rural or Balance Area	89,717	63.6%	121,166	62.4%	178,702	59.8%	389,586	61.4%
Rural Residential	1,344	1.0%	22,833	11.8%	14,321	4.8%	38,499	6.1%
Undescribed or Road Reserve			49	0.0%	136	0.0%	185	0.0%
Urban Other	507	0.4%	7,172	3.7%	4,874	1.6%	12,553	2.0%
Urban Residential	190	0.1%	13,959	7.2%	12,906	4.3%	27,055	4.3%
Waterbodies - Inland	232	0.2%	2,962	1.5%	6,759	2.3%	9,952	1.6%
TOTAL	140,995	100%	194,094	100%	298,993	100%	634,082	100%

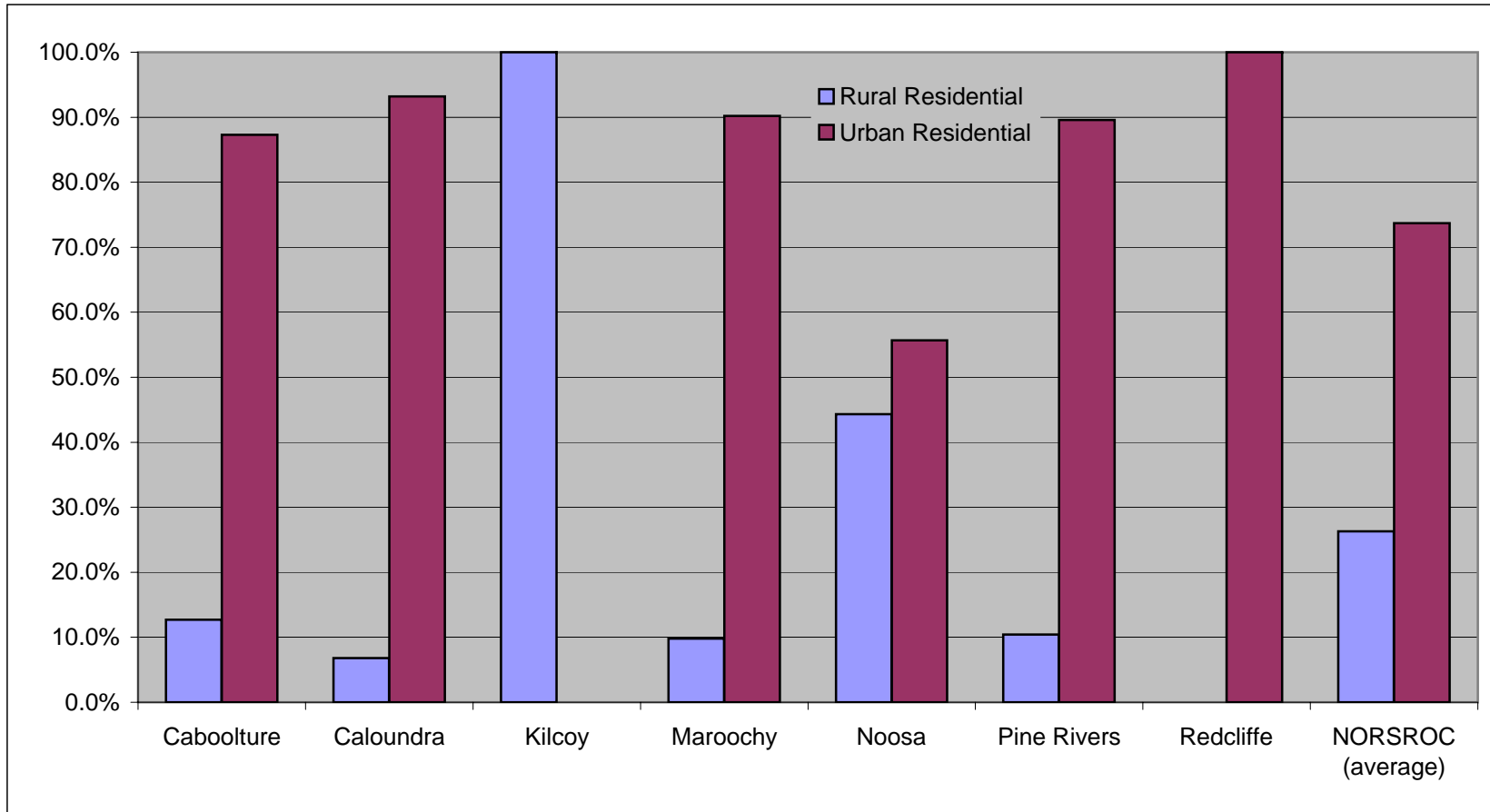
Source: Compilation of data from SEQ2021 derived from Local Governments' IPA planning schemes



NORSROC SUB-REGIONAL FRAMEWORK: Statistical Analysis
Lot Approvals 2002-03 x LGA

CATEGORY	Caboolture	Caloundra	Kilcoy	Maroochy	Noosa	Pine Rivers	Redcliffe	NORSROC (average)
Rural Residential	12.7%	6.8%	100.0%	9.8%	44.3%	10.4%	0.0%	26.3%
Urban Residential	87.3%	93.2%	0.0%	90.2%	55.7%	89.6%	100.0%	73.7%

Source: Compilation of data from PIFU web page for Mar 2002-Mar 2003

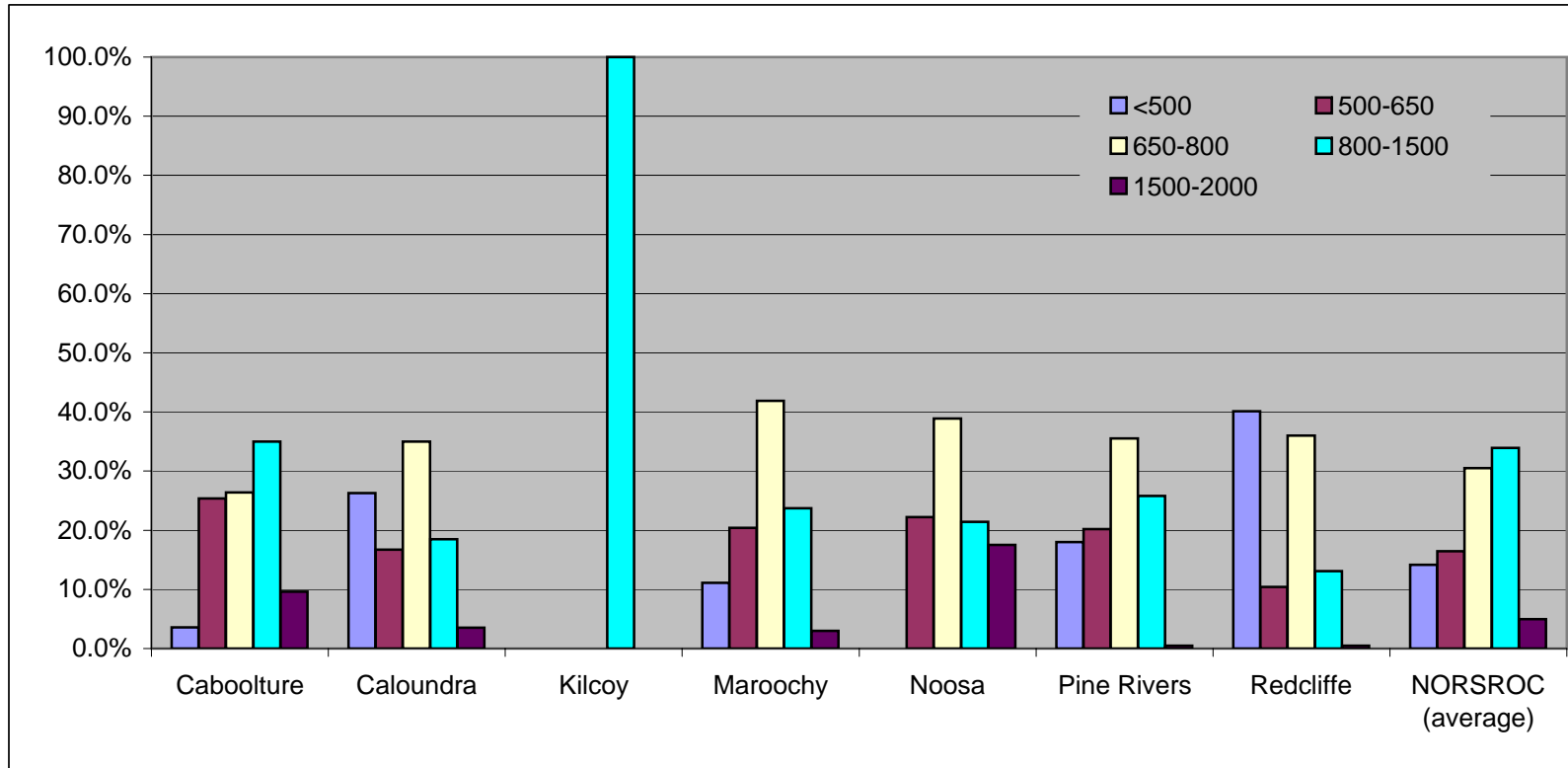


NORSROC SUB-REGIONAL FRAMEWORK: Statistical Analysis

Lot Size Reg'n 2002-03 x LGA

YEAR	Caboolture	Caloundra	Kilcoy	Maroochy	Noosa	Pine Rivers	Redcliffe	NORSROC (average)
<500	3.6%	26.3%	0.0%	11.1%	0.0%	18.0%	40.1%	14.2%
500-650	25.4%	16.7%	0.0%	20.4%	22.2%	20.2%	10.4%	16.5%
650-800	26.4%	35.0%	0.0%	41.9%	38.9%	35.5%	36.0%	30.5%
800-1500	35.0%	18.5%	100.0%	23.7%	21.4%	25.8%	13.1%	33.9%
1500-2000	9.6%	3.5%	0.0%	3.0%	17.5%	0.5%	0.5%	4.9%

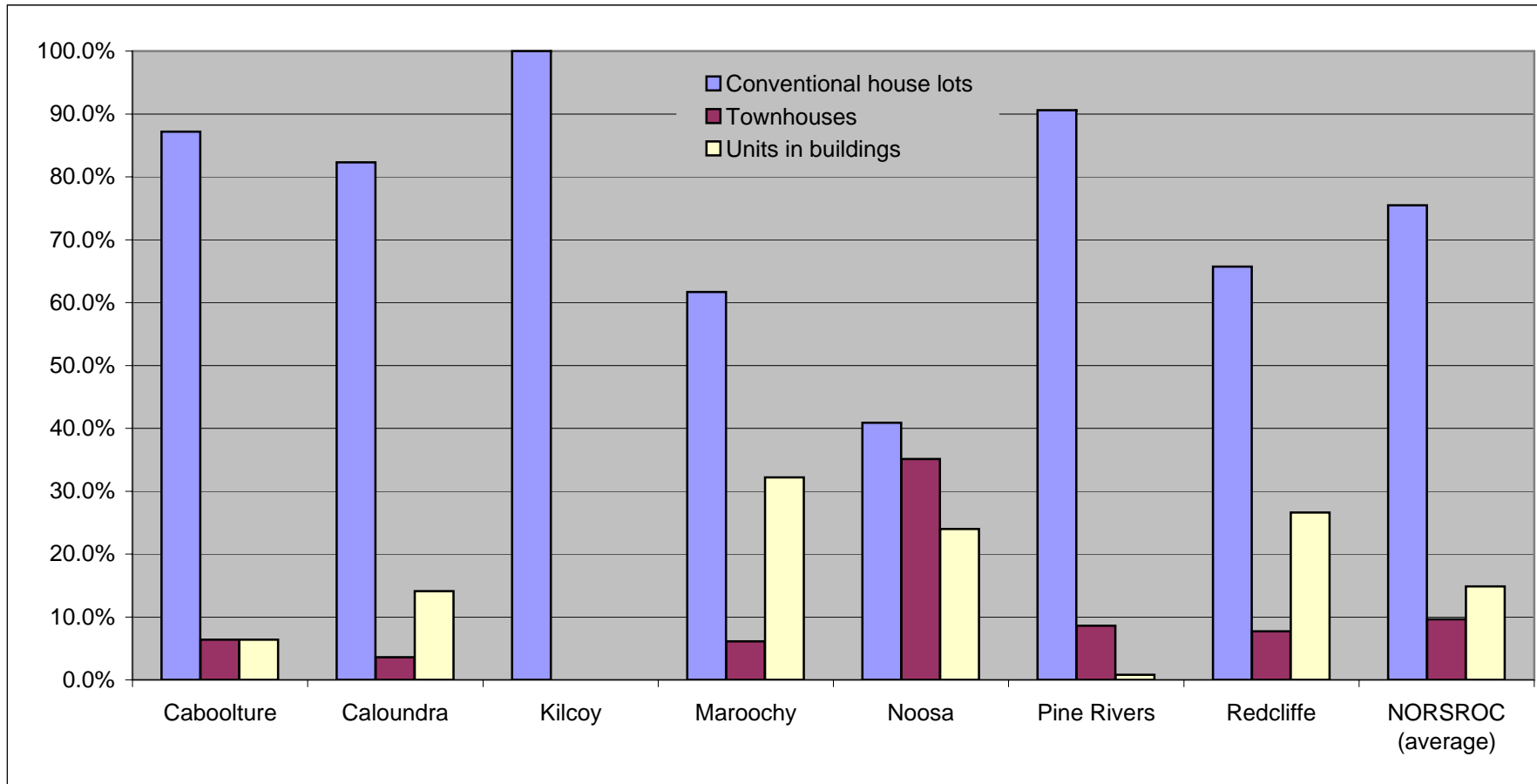
Source: Compilation of data from PIFU web page for Mar 2002-Mar 2003



NORSROC SUB-REGIONAL FRAMEWORK: Statistical Analysis
Lot Type, Urban 2002-03 x LGA

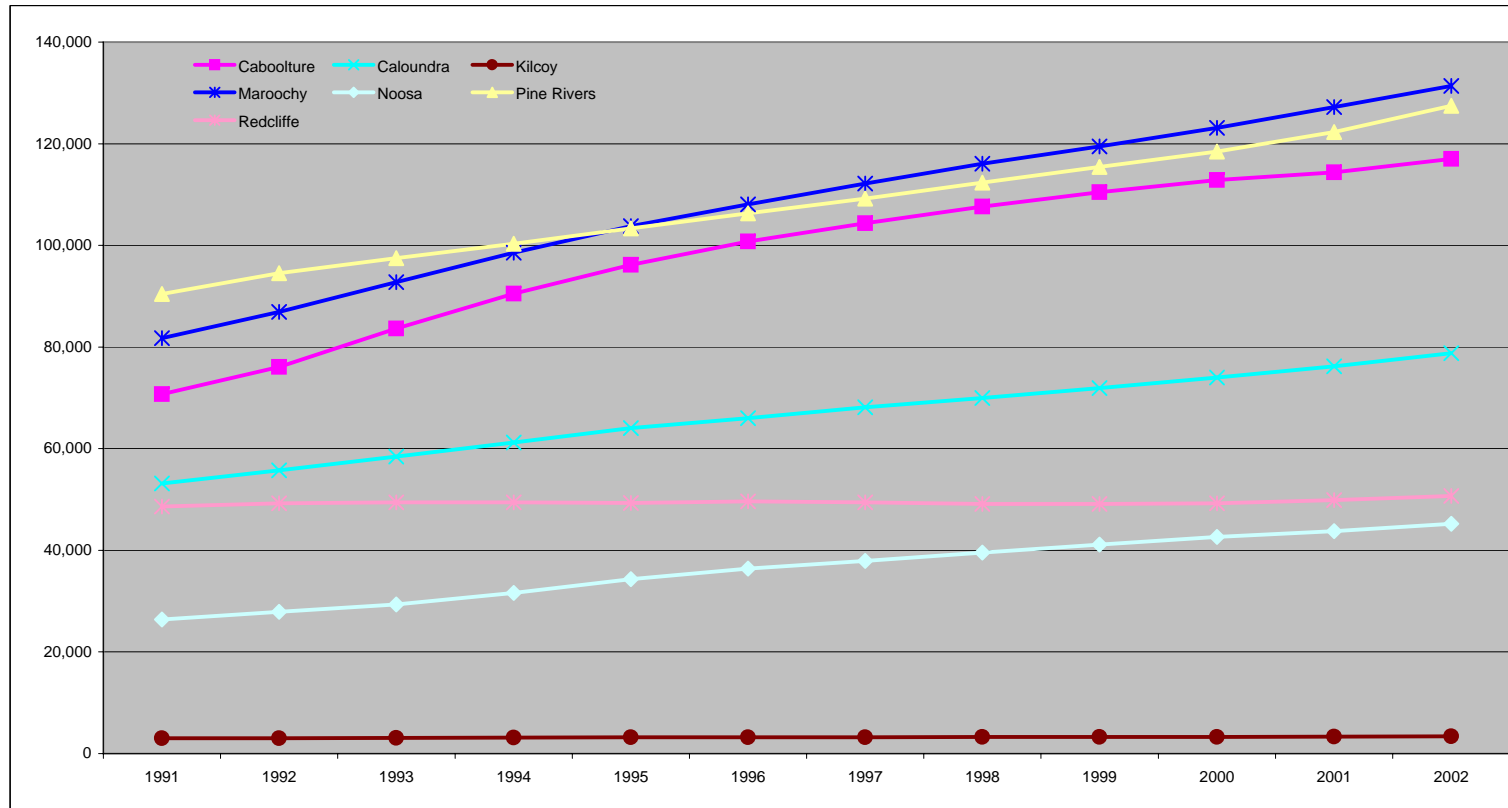
CATEGORY	Caboolture	Caloundra	Kilcoy	Maroochy	Noosa	Pine Rivers	Redcliffe	NORSROC (average)
Conventional house lots	87.2%	82.3%	100.0%	61.7%	40.9%	90.6%	65.7%	75.5%
Townhouses	6.4%	3.6%	0.0%	6.1%	35.1%	8.6%	7.7%	9.6%
Units in buildings	6.4%	14.1%	0.0%	32.2%	24.0%	0.8%	26.6%	14.9%

Source: Compilation of data from PIFU web page for Mar 2002-Mar 2003



Year	Caboolture		Caloundra		Kilcoy		Maroochy		Noosa		Pine Rivers		Redcliffe	
	Estimated Resident Population	5-Year Rate	Estimated Resident Population	5-Year Rate	Estimated Resident Population	5-Year Rate	Estimated Resident Population	5-Year Rate	Estimated Resident Population	5-Year Rate	Estimated Resident Population	5-Year Rate	Estimated Resident Population	5-Year Rate
1991	70,722		53,139		3,032		81,766		26,397		90,453		48,631	
1992	76,059		55,731		3,054		86,927		27,896		94,555		49,224	
1993	83,657		58,422		3,113		92,762		29,339		97,465		49,441	
1994	90,523		61,240		3,156		98,550		31,628		100,315		49,445	
1995	96,153		64,054		3,188		103,796		34,339		103,345		49,315	
1996	100,757	7.3%	65,999	4.4%	3,200	1.1%	108,072	5.7%	36,400	6.6%	106,277	3.3%	49,611	0.4%
1997	104,354		68,114		3,237		112,141		37,924		109,173		49,428	
1998	107,657		69,964		3,246		116,057		39,578		112,356		49,123	
1999	110,493		71,942		3,266		119,494		41,110		115,456		49,106	
2000	112,849		73,982		3,284		123,151		42,664		118,483		49,229	
2001	114,338	2.6%	76,207	2.9%	3,312	0.7%	127,202	3.3%	43,758	3.8%	122,303	2.8%	49,891	0.1%
2002	116,992		78,798		3,395		131,395		45,214		127,439		50,718	

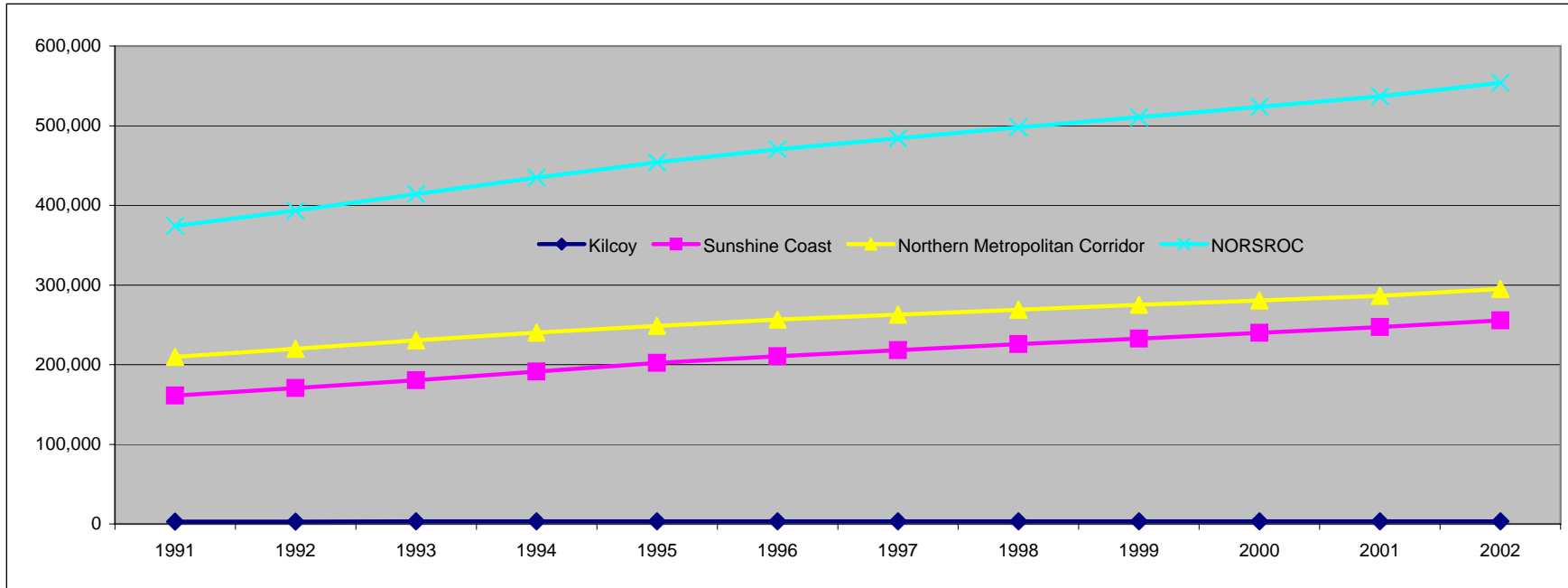
Source: Compilation of data from PIFU web page



NORSROC SUB-REGIONAL FRAMEWORK: Statistical Analysis
Population 1991-2002 by SSR

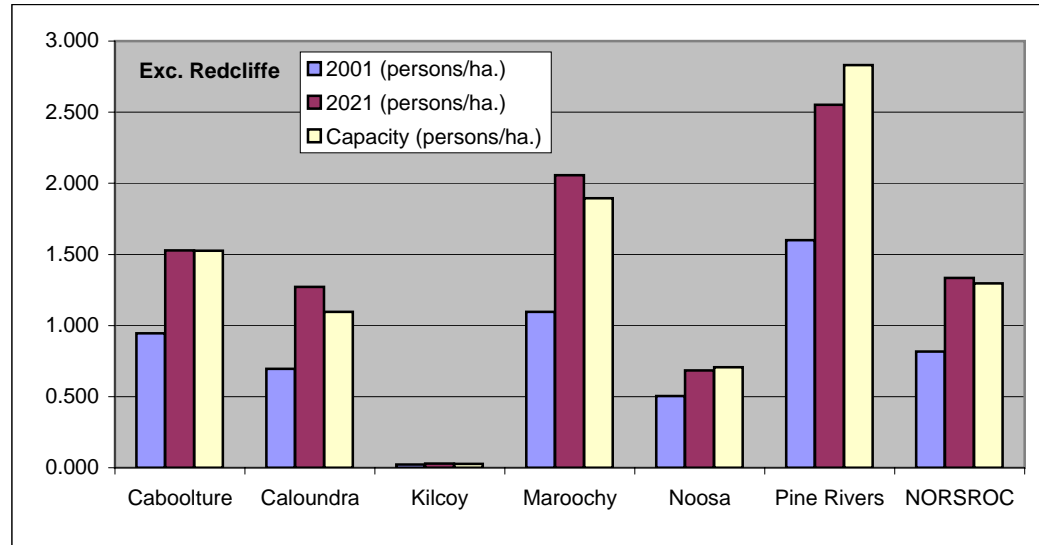
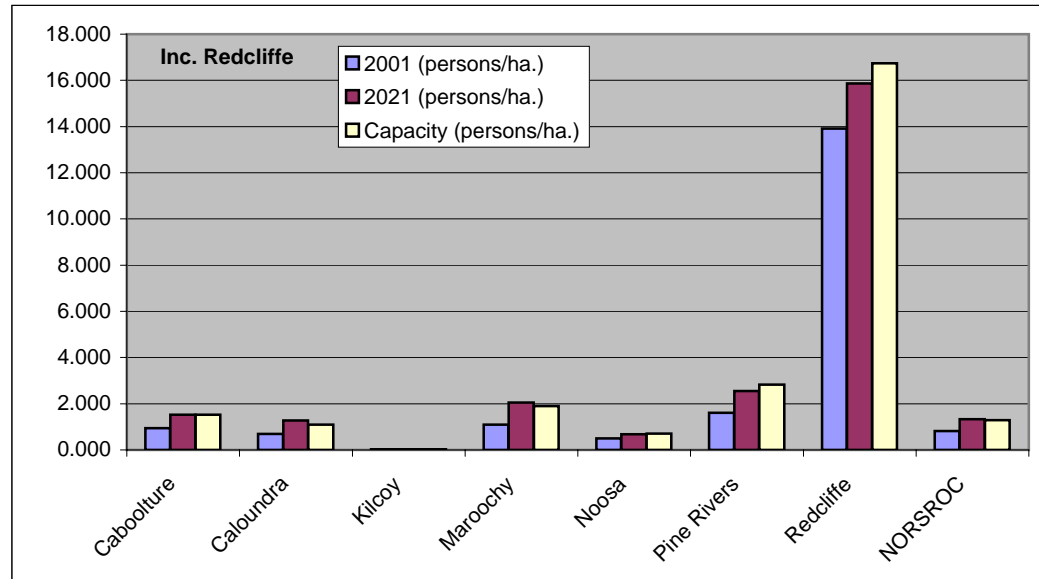
Year	Kilcoy		Sunshine Coast		Northern Metropolitan Corridor		NORSROC	
	Estimated Resident Population	5-Year Rate	Estimated Resident Population	5-Year Rate	Estimated Resident Population	5-Year Rate	Estimated Resident Population	5-Year Rate
1991	3,032		161,302		209,806		374,140	
1992	3,054		170,554		219,838		393,446	
1993	3,113		180,523		230,563		414,199	
1994	3,156		191,418		240,283		434,857	
1995	3,188		202,189		248,813		454,190	
1996	3,200	1.1%	210,471	5.5%	256,645	4.1%	470,316	4.7%
1997	3,237		218,179		262,955		484,371	
1998	3,246		225,599		269,136		497,981	
1999	3,266		232,546		275,055		510,867	
2000	3,284		239,797		280,561		523,642	
2001	3,312	0.7%	247,167	3.3%	286,532	2.2%	537,011	2.7%
2002	3,395		255,407		295,149		553,951	

Source: Compilation of data from PIFU web page



NORSROC SUB-REGIONAL FRAMEWORK: Statistical Analysis
Population Density 2001-2021

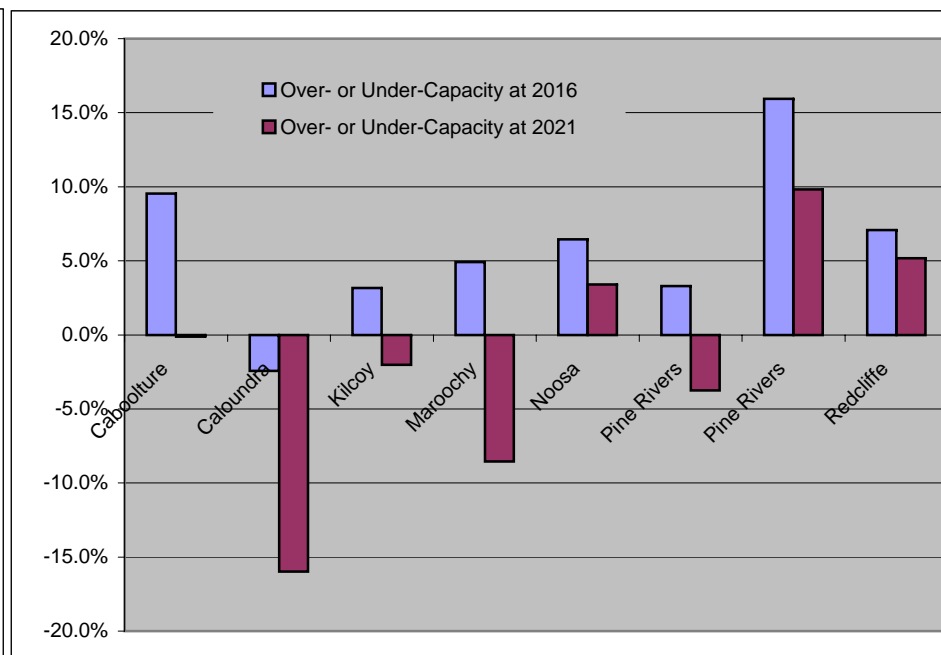
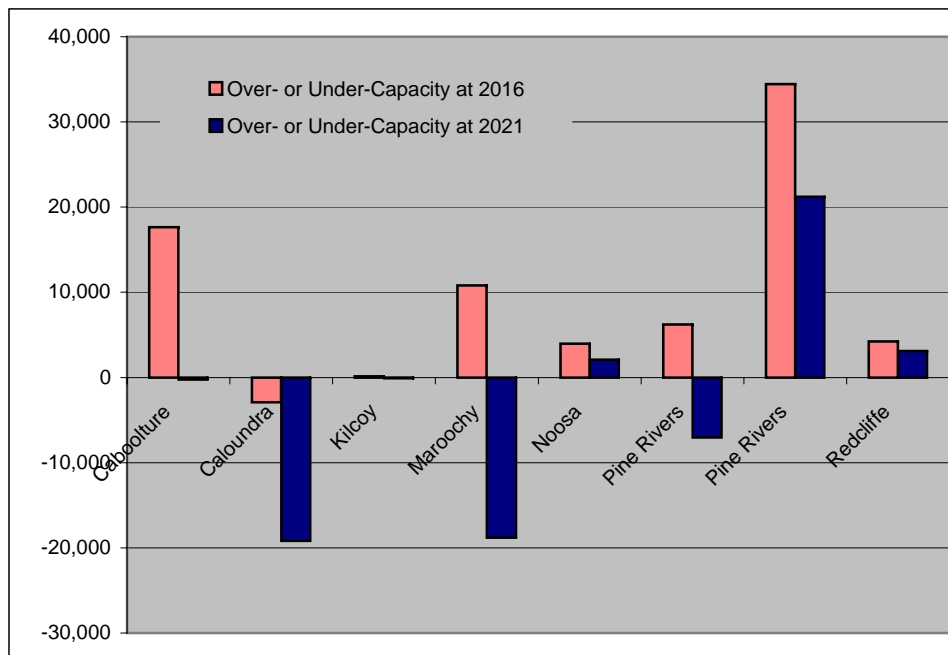
	2001 (persons/ha.)	2021 (persons/ha.)	Capacity (persons/ha.)
Caboolture	0.944	1.528	1.526
Caloundra	0.696	1.271	1.095
Kilcoy	0.023	0.028	0.028
Maroochy	1.096	2.057	1.895
Noosa	0.505	0.683	0.707
Pine Rivers	1.601	2.553	2.830
Redcliffe	13.918	15.872	16.739
NORSROC	0.816	1.335	1.295



NORSROC SUB-REGIONAL FRAMEWORK: Statistical Analysis
Population Capacity x LGA

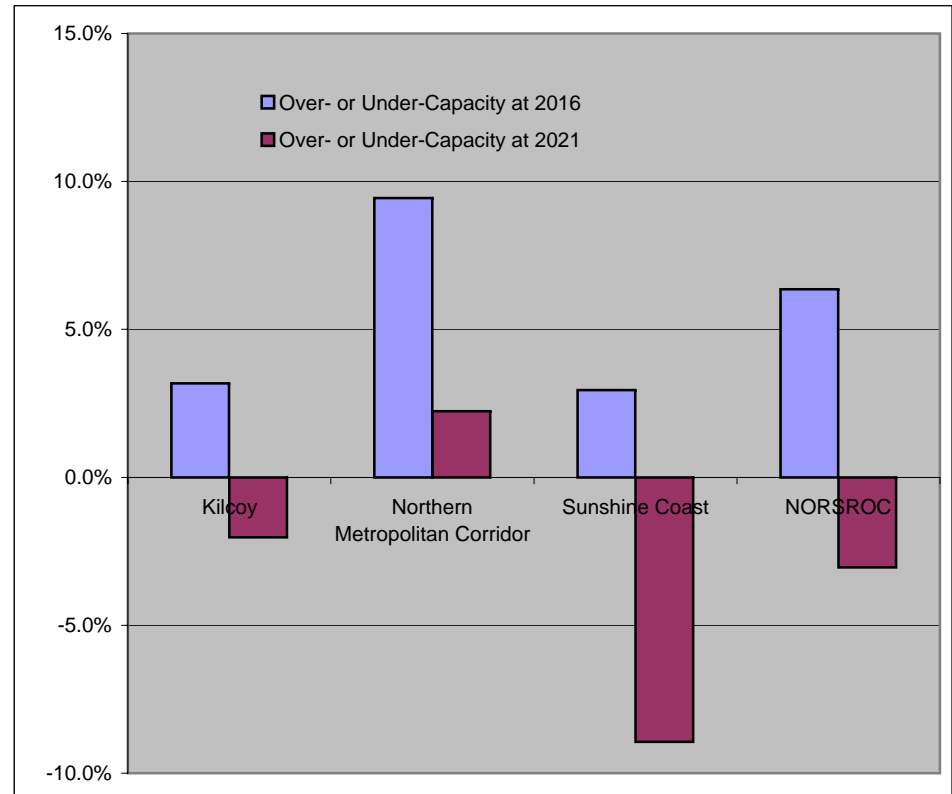
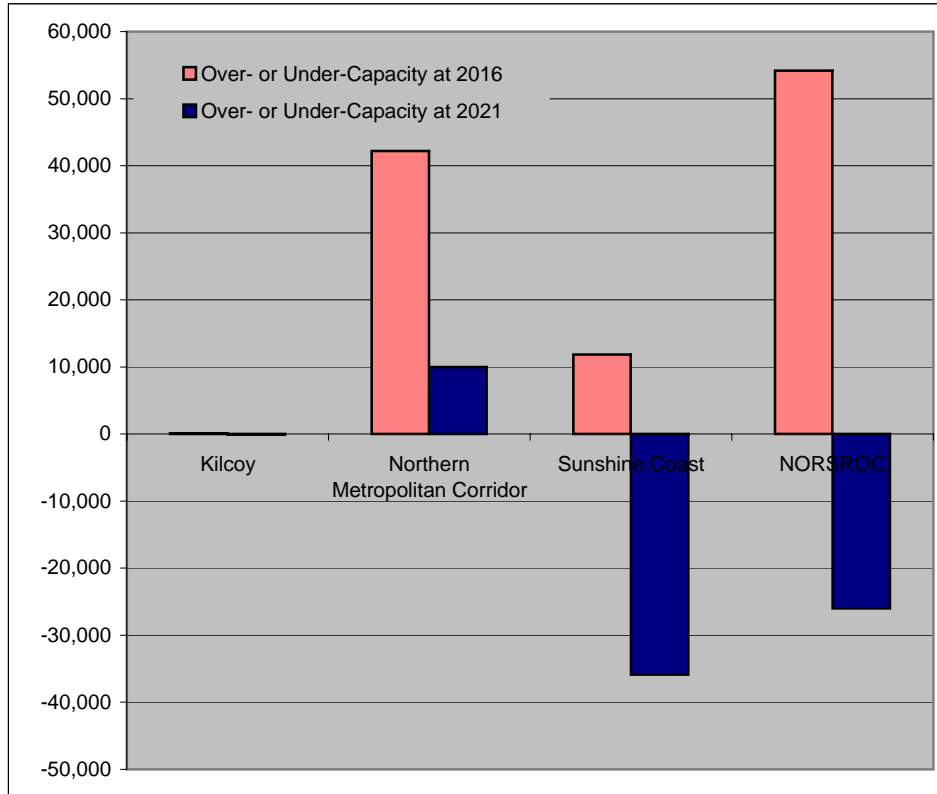
Category	Caboolture	Caloundra	Kilcoy	Maroochy	Noosa	Pine Rivers		Redcliffe
						@2.5 persons per household	@2.9 persons per household	
2001 Estimated Resident Population	114,338	76,207	3,312	127,202	43,758	122,303		49,891
Population Capacity	184,743	120,000	4,000	220,000	61,347	187,950	216,203	60,000
Remaining Capacity at 2001	38.1%	36.5%	17.2%	42.2%	28.7%	34.9%	43.4%	16.8%
PIFU Projections at 2016	167,114	122,928	3,873	209,193	57,394	181,747		55,760
Over- or Under-Capacity at 2016	17,629	-2,928	127	10,807	3,953	6,203	34,456	4,240
Over- or Under-Capacity at 2016	9.5%	-2.4%	3.2%	4.9%	6.4%	3.3%	15.9%	7.1%
PIFU Projections at 2021	184,968	139,181	4,081	238,786	59,253	194,991		56,893
Over- or Under-Capacity at 2021	-225	-19,181	-81	-18,786	2,094	-7,041	21,212	3,107
Over- or Under-Capacity at 2021	-0.1%	-16.0%	-2.0%	-8.5%	3.4%	-3.7%	9.8%	5.2%

Source: Compilation of data from PIFU and Local Governments



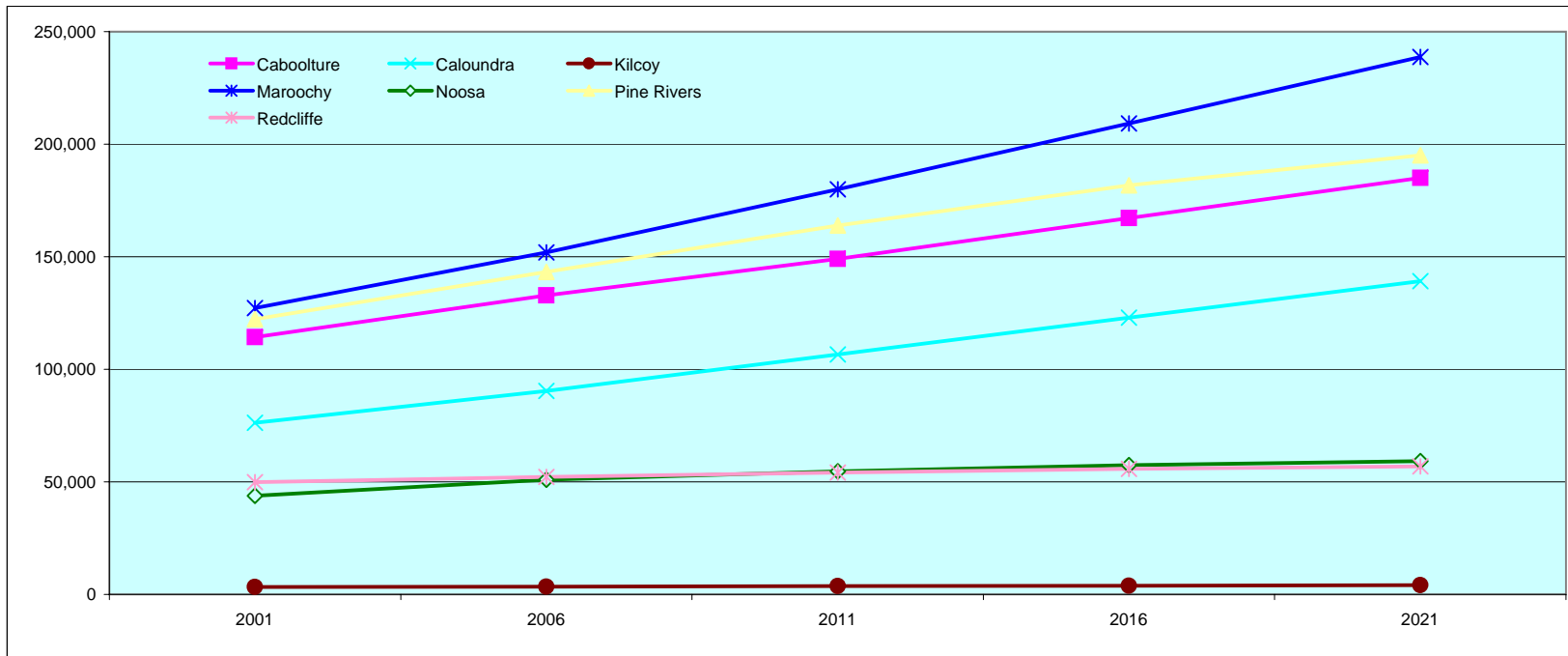
Category	Kilcoy	Northern Metropolitan Corridor	Sunshine Coast	NORSROC
2001 Estimated Resident Population	3,312	286,532	247,167	537,011
Population Capacity	4,000	446,819	401,347	852,166
Remaining Capacity at 2001	17.2%	35.9%	38.4%	37.0%
PIFU Projections at 2016	3,873	404,621	389,515	798,009
Over- or Under-Capacity at 2016	127	42,198	11,832	54,157
Over- or Under-Capacity at 2016	3.2%	9.4%	2.9%	6.4%
PIFU Projections at 2021	4,081	436,852	437,220	878,153
Over- or Under-Capacity at 2021	-81	9,967	-35,873	-25,987
Over- or Under-Capacity at 2021	-2.0%	2.2%	-8.9%	-3.0%

Source: Compilation of data from PIFU and Local Governments



Year	Caboolture		Caloundra		Kilcoy		Maroochy		Noosa		Pine Rivers		Redcliffe		NORSROC	
	Population	Rate	Population	Rate	Population	Rate	Population	Rate	Population	Rate	Population	Rate	Population	Rate	Population	Rate
2001	114,338		76,207		3,312		127,202		43,758		122,303		49,891		537,011	
2006	132,882	3.0%	90,447	3.4%	3,478	1.0%	151,863	3.5%	50,935	3.0%	143,332	3.2%	52,171	0.9%	625,108	3.0%
2011	149,107	2.3%	106,579	3.3%	3,666	1.1%	179,950	3.4%	54,618	1.4%	163,814	2.7%	54,179	0.8%	711,913	2.6%
2016	167,114	2.3%	122,928	2.9%	3,873	1.1%	209,193	3.0%	57,394	1.0%	181,747	2.1%	55,760	0.6%	798,009	2.3%
2021	184,968	2.0%	139,181	2.5%	4,081	1.0%	238,786	2.6%	59,253	0.6%	194,991	1.4%	56,893	0.4%	878,153	1.9%
2026	201,071	1.7%	155,024	2.2%	4,294	1.0%	267,754	2.3%	60,002	0.3%	206,224	1.1%	57,566	0.2%	951,935	1.6%

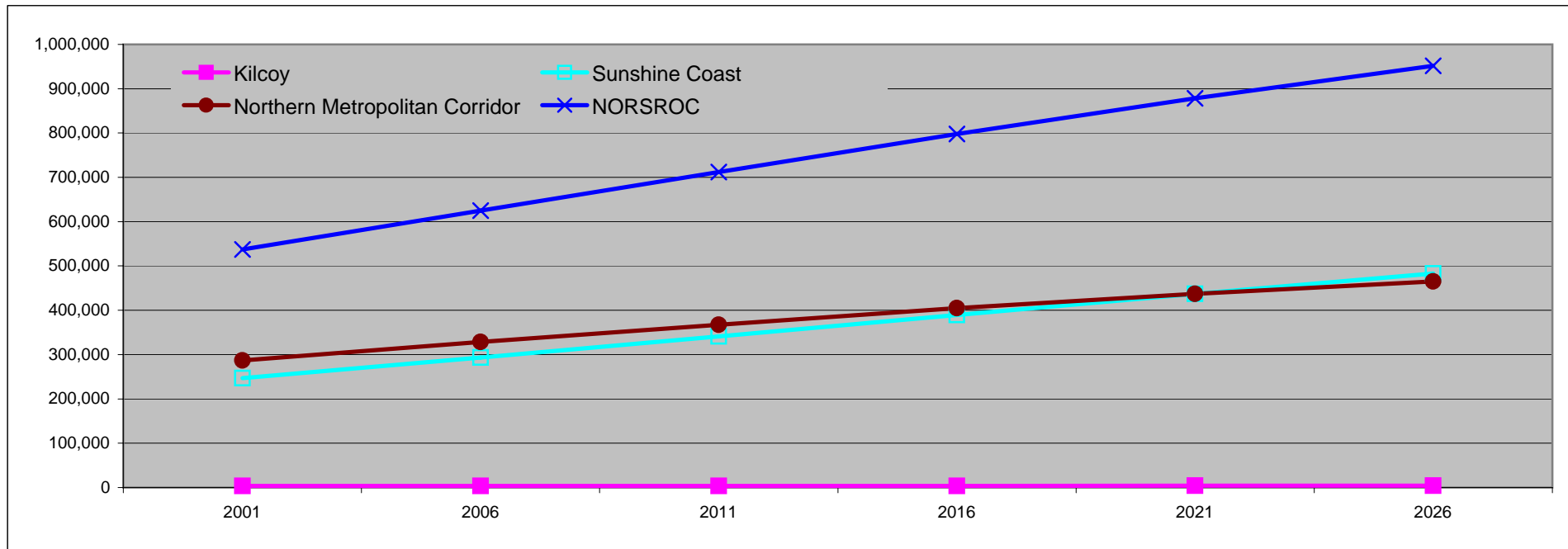
Source: Medium series, PIFU supplied data (11/2003)



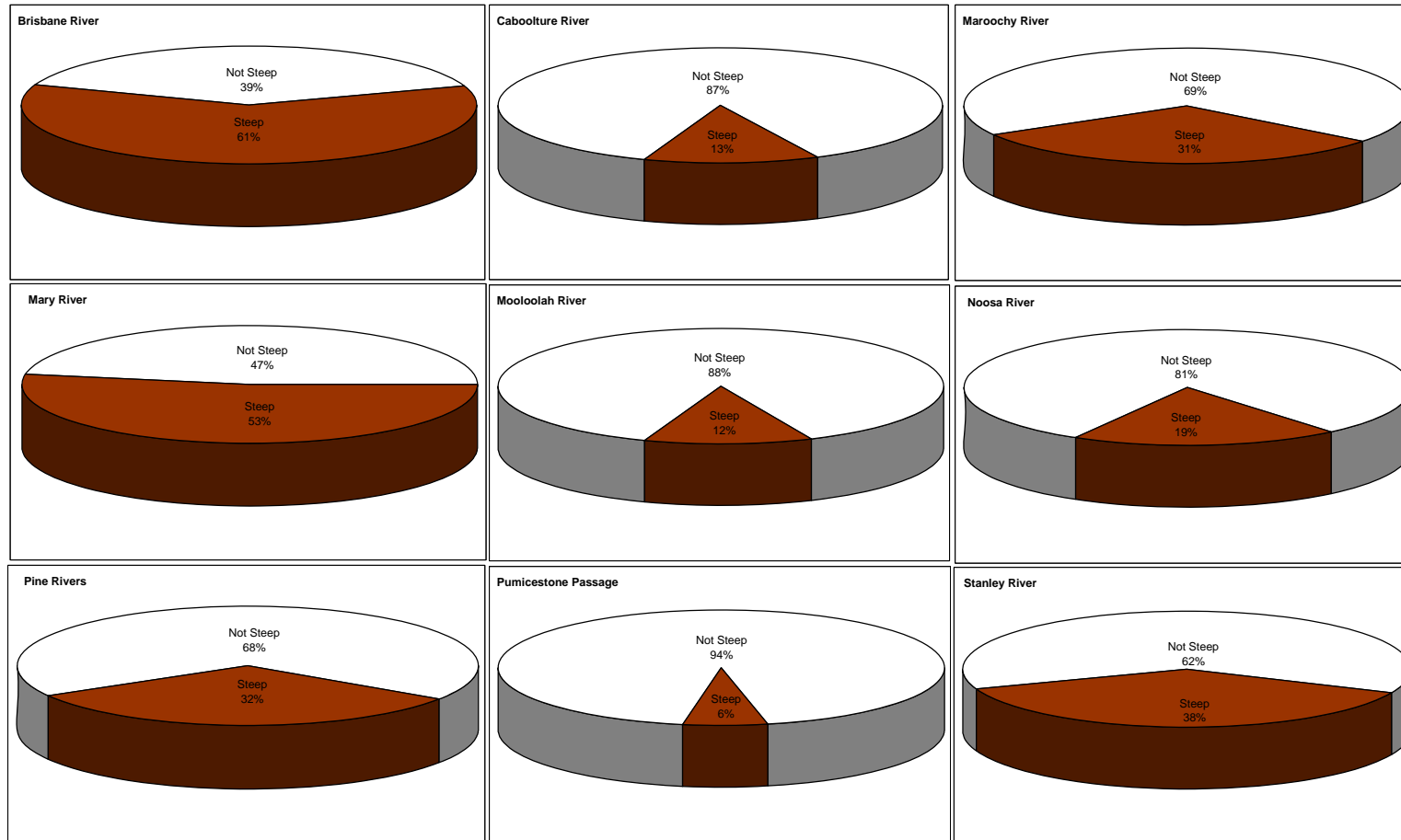
NORSROC SUB-REGIONAL FRAMEWORK: Statistical Analysis
Population Projected x SSR

Year	Kilcoy		Sunshine Coast		Northern Metropolitan Corridor		NORSROC	
	Population	Rate	Population	Rate	Population	Rate	Population	Rate
2001	3,312		247,167		286,532		537,011	
2006	3,478	1.0%	293,245	3.4%	328,385	2.7%	625,108	3.0%
2011	3,666	1.1%	341,147	3.0%	367,100	2.2%	711,913	2.6%
2016	3,873	1.1%	389,515	2.7%	404,621	1.9%	798,009	2.3%
2021	4,081	1.0%	437,220	2.3%	436,852	1.5%	878,153	1.9%
2026	4,294	1.0%	482,780	2.0%	464,861	1.2%	951,935	1.6%

Source: PIFU supplied data (11/2003)



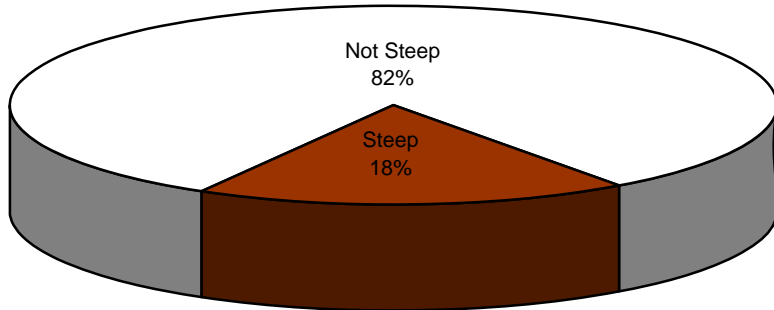
CATCHMENT	Not Steep		Steep		TOTAL
	Hectare	%	Hectare	%	
Brisbane River	12,974	39.1%	20,203	60.9%	33,177
Caboolture River	41,087	87.1%	6,064	12.9%	47,151
Maroochy River	42,428	68.8%	19,283	31.2%	61,711
Mary River	73,284	47.1%	82,197	52.9%	155,481
Mooloolah River	17,327	87.9%	2,396	12.1%	19,724
Moreton Bay	3,607	100.0%	0	0.0%	3,607
Noosa River	44,508	80.6%	10,739	19.4%	55,247
Pacific Ocean	4,634	88.9%	581	11.1%	5,215
Pine Rivers	49,549	67.6%	23,704	32.4%	73,253
Pumicestone Passage	68,897	93.9%	4,506	6.1%	73,403
Stanley River	80,468	62.2%	48,851	37.8%	129,319
Stumer Creek	1,262	97.7%	30	2.3%	1,293
NORSROC	440,024	66.8%	218,557	33.2%	658,581



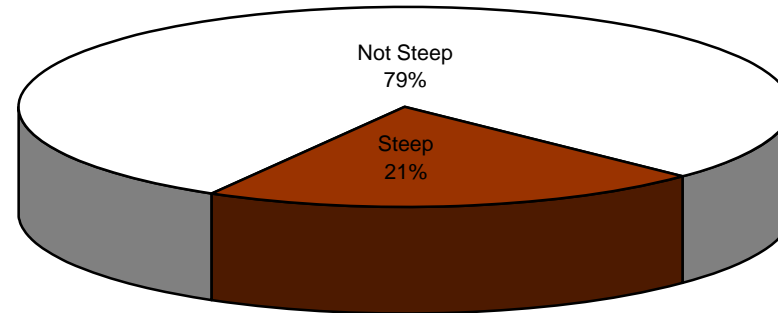
Steep Land x Col

COMMUNITY OF INTEREST	Not Steep		Steep		TOTAL
	Hectare	%	Hectare	%	
Moreton Bay North	137,700	81.8%	30,735	18.2%	168,435
Sunshine Coast	135,749	78.8%	36,543	21.2%	172,293
Sunshine Hinterland	166,535	52.4%	151,341	47.6%	317,876
NORSROC	439,984	66.8%	218,620	33.2%	658,604

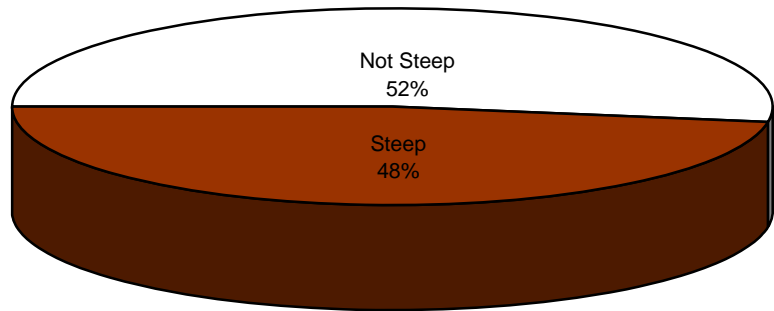
Moreton Bay North



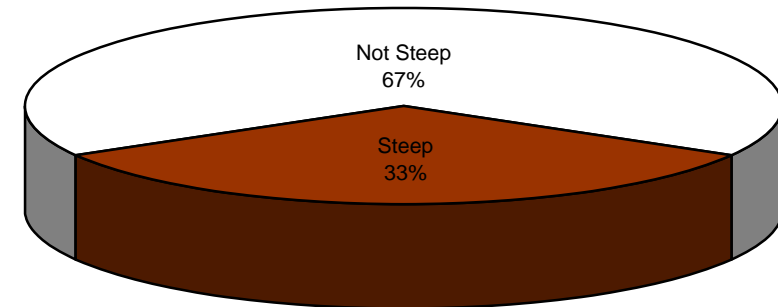
Sunshine Coast



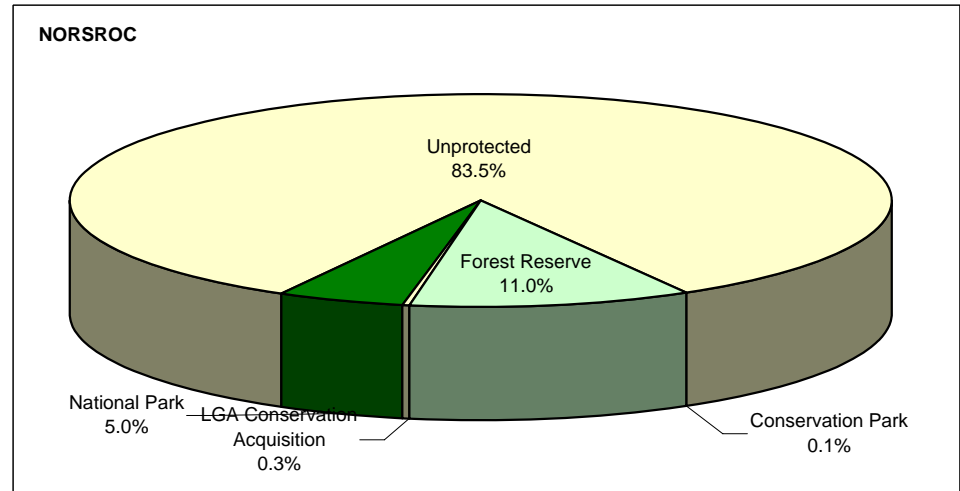
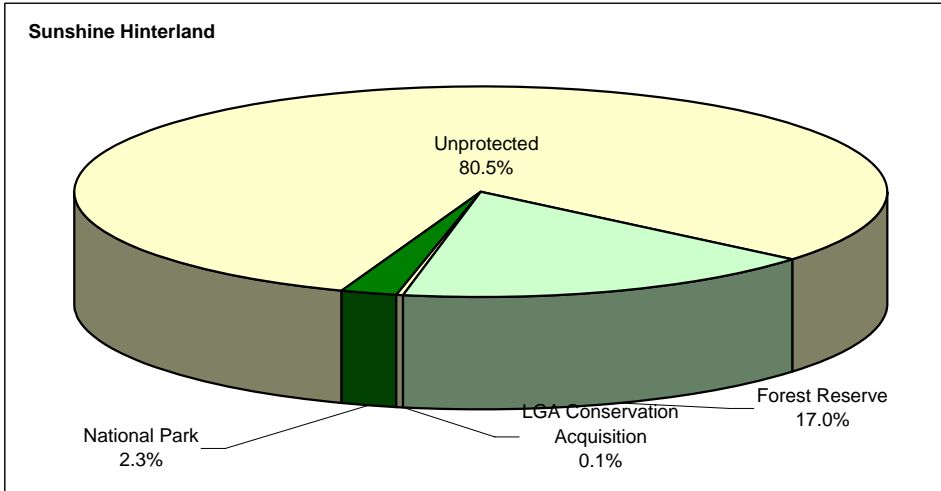
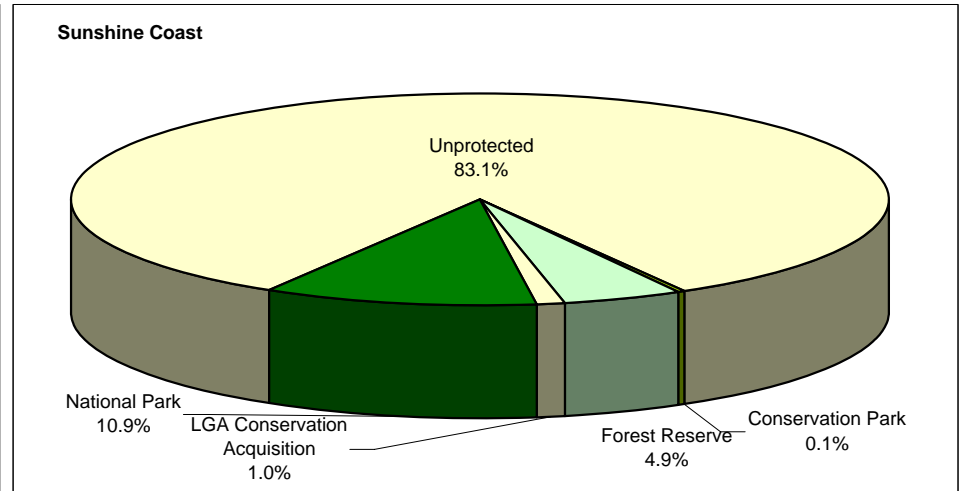
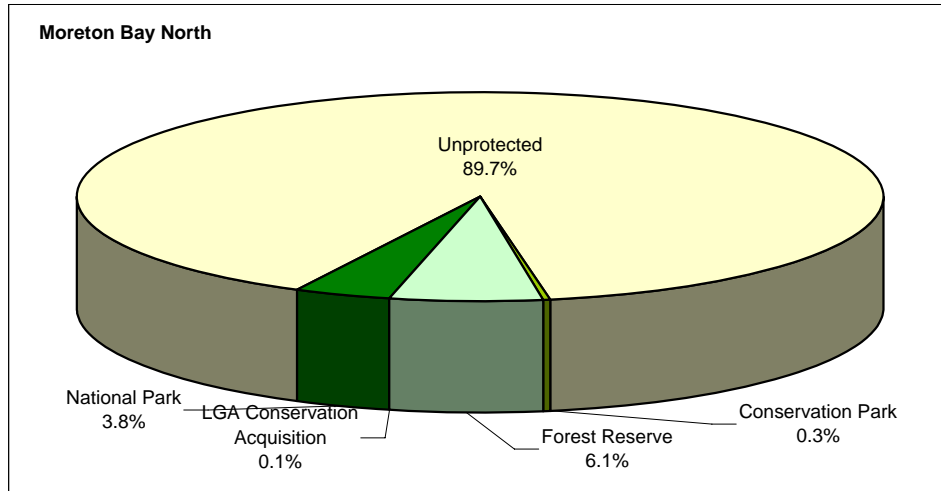
Sunshine Hinterland



NORSROC



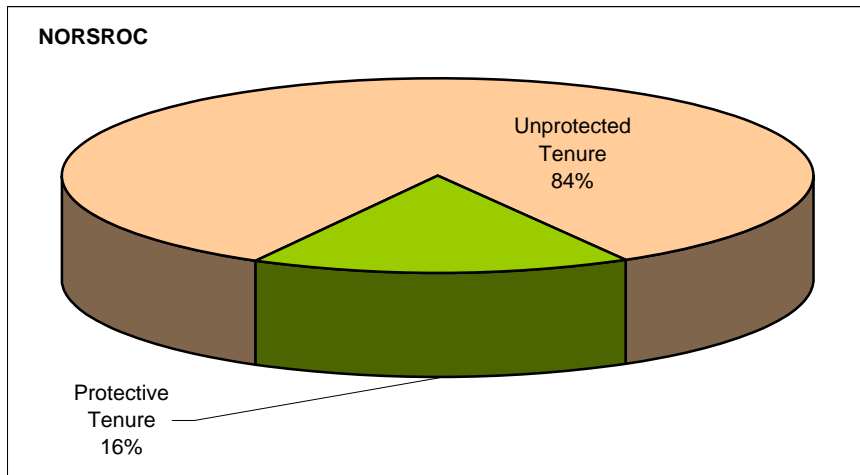
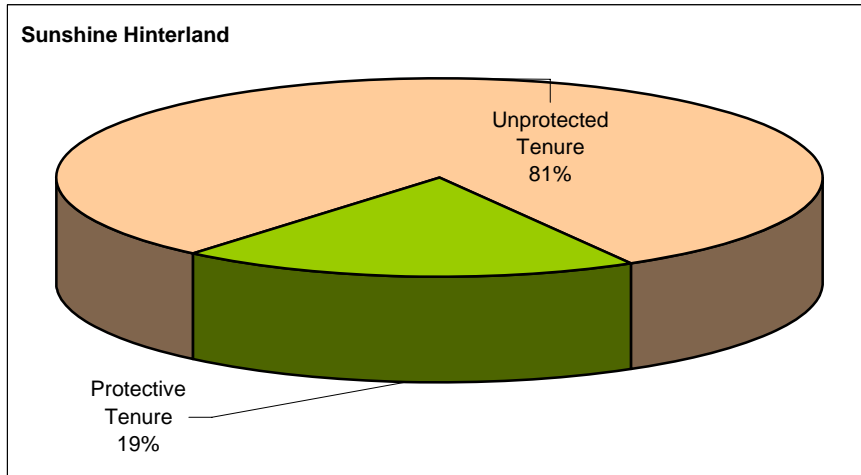
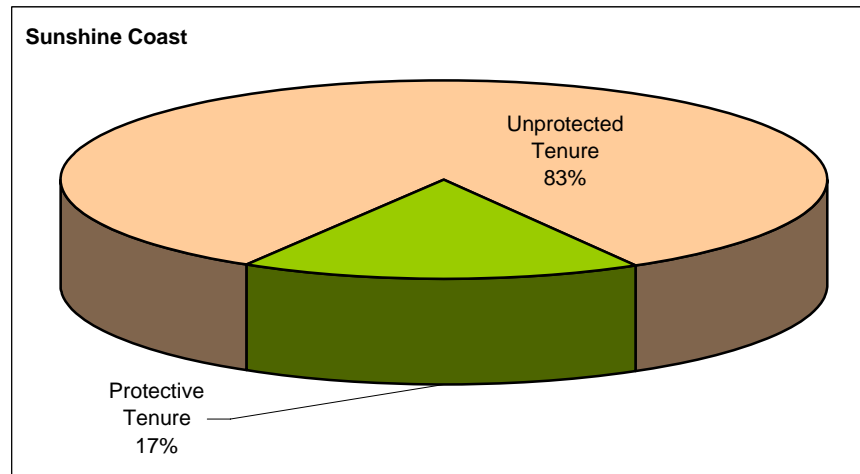
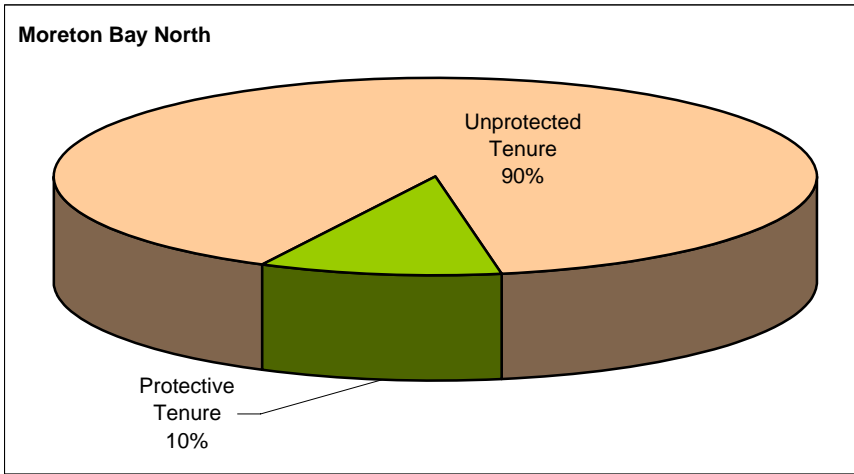
COMMUNITY OF INTEREST	Conservation Park		Forest Reserve		LGA Conservation Acquisition		National Park		Unprotected		Total	
	Hectare	%	Hectare	%	Hectare	%	Hectare	%	Hectare	%	Hectare	%
Moreton Bay North	470	0.3%	10,351	6.1%	131	0.1%	6,455	3.8%	151,028	89.7%	168,435	25.6%
Sunshine Coast	247	0.1%	8,393	4.9%	1,672	1.0%	18,832	10.9%	143,149	83.1%	172,293	26.2%
Sunshine Hinterland	138	0.0%	53,881	17.0%	396	0.1%	7,444	2.3%	256,016	80.5%	317,876	48.3%
NORSROC	855	0.1%	72,625	11.0%	2,200	0.3%	32,732	5.0%	550,193	83.5%	658,604	100.0%



NORSROC SUB-REGIONAL FRAMEWORK: Statistical Analysis

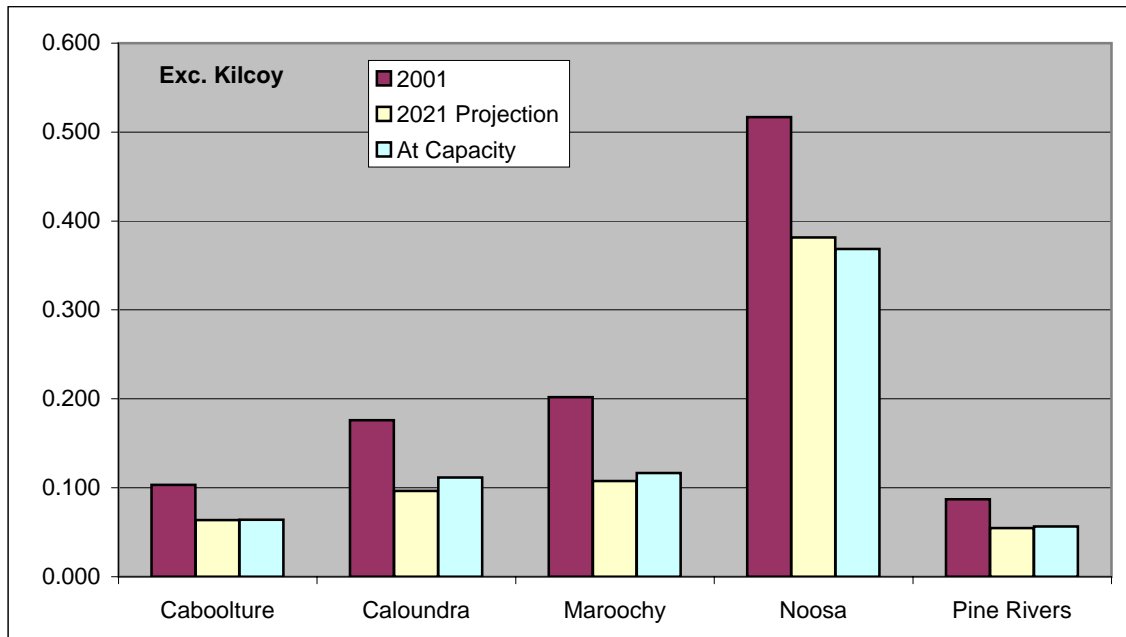
Tenure, Protective X Col Total

COMMUNITY OF INTEREST	Protective Tenure		Unprotected Tenure		TOTAL
	Hectare	%	Hectare	%	
Moreton Bay North	17,407	10.3%	151,028	89.7%	168,435
Sunshine Coast	29,144	16.9%	143,149	83.1%	172,293
Sunshine Hinterland	61,861	19.5%	256,016	80.5%	317,876
NORSROC	108,412	16.5%	550,193	83.5%	658,604



NORSROC SUB-REGIONAL FRAMEWORK: Statistical Analysis
Tenure, Protective X Population

LGA	Protective Tenure (ha.)	Hectares of Protective Tenure per Person (assuming no increase)			Hectares of Additional Protective Tenure Required			
	2004	2001	2021 Projection	At Capacity	2021 Projection	%	At Capacity	%
Caboolture	11,809	0.103	0.064	0.064	7,295	62%	7,272	61.6%
Caloundra	13,411	0.176	0.096	0.112	11,082	83%	7,706	57.5%
Kilcoy	24,257	7.324	5.944	6.064	5,632	23%	5,039	20.8%
Maroochy	25,686	0.202	0.108	0.117	22,532	88%	18,739	73.0%
Noosa	22,617	0.517	0.382	0.369	8,009	35%	9,091	40.2%
Pine Rivers	10,651	0.087	0.055	0.057	6,330	59%	5,717	53.7%
NORSROC	110,435				60,880		53,564	



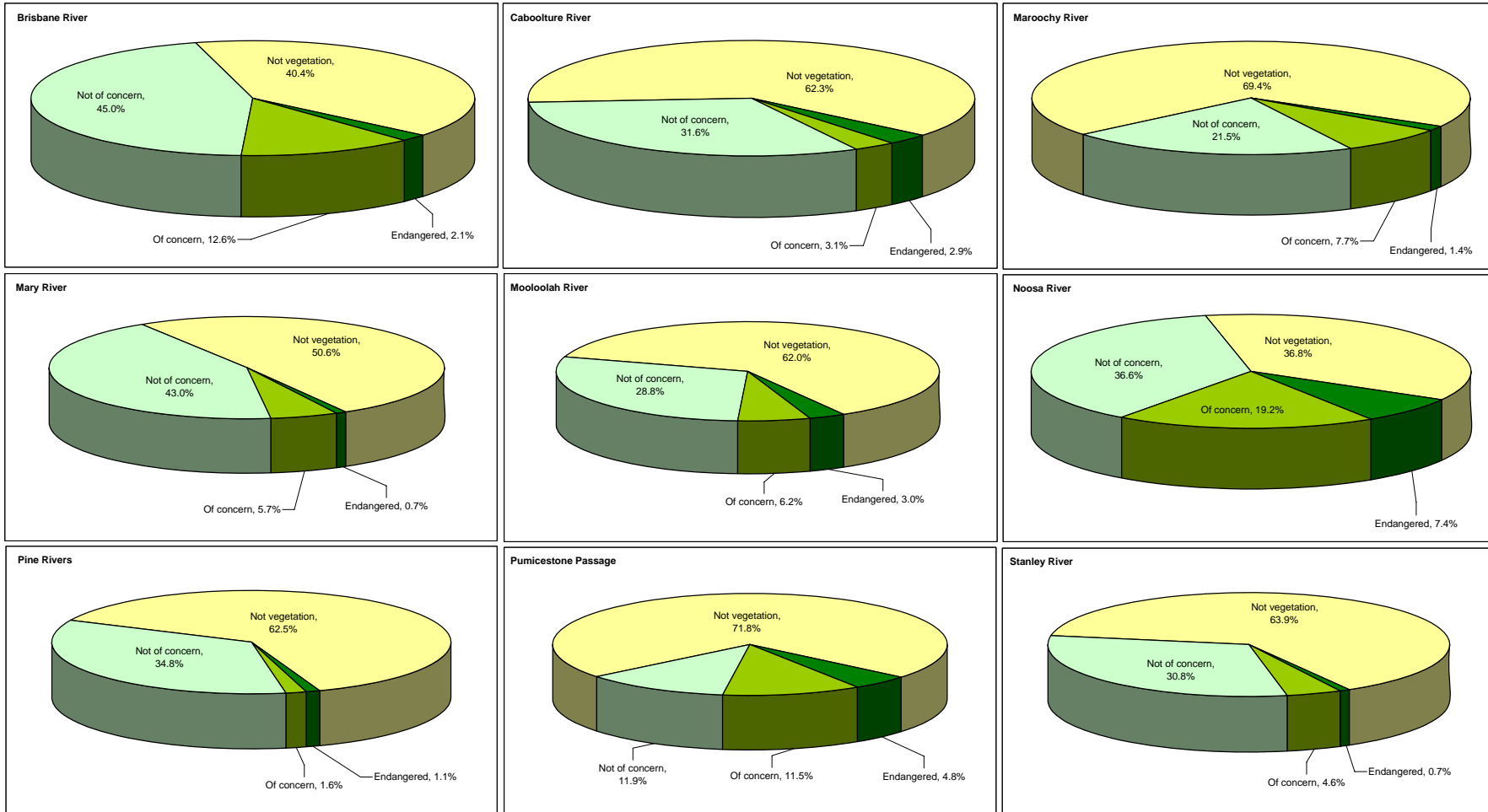
NORSROC SUB-REGIONAL FRAMEWORK: Statistical Analysis

Vegetation Status x LGA

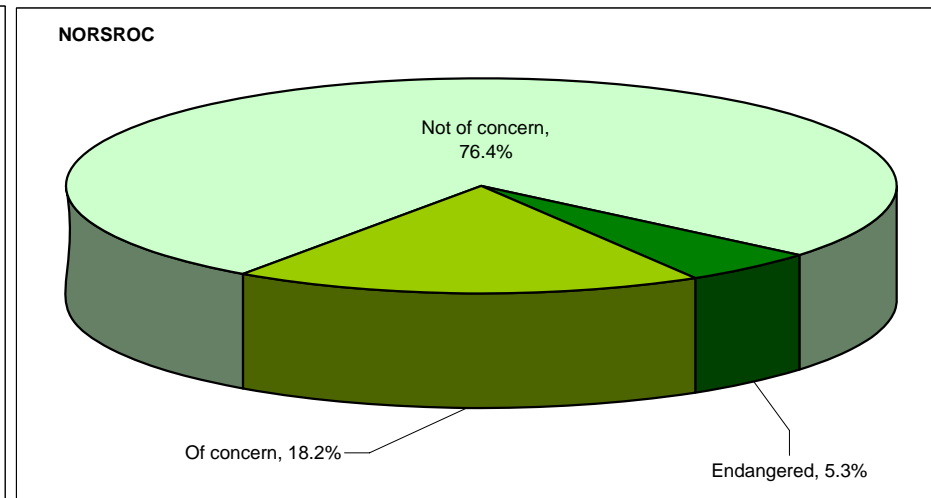
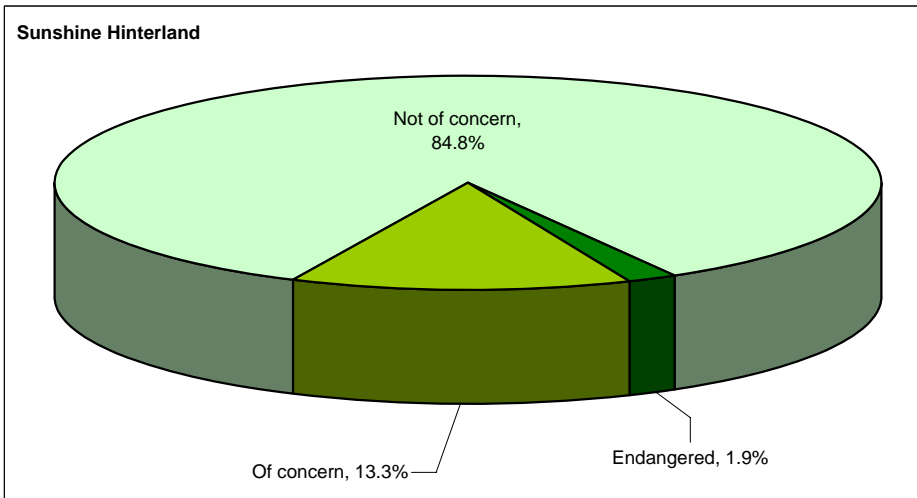
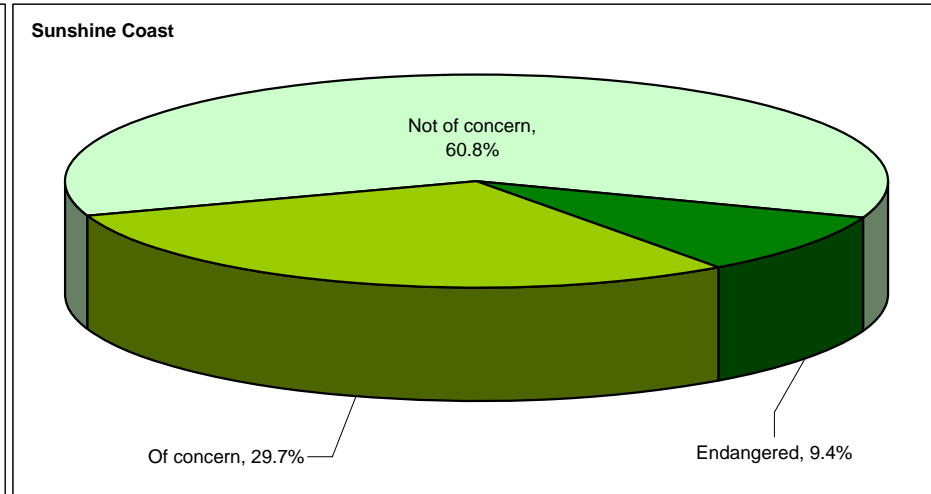
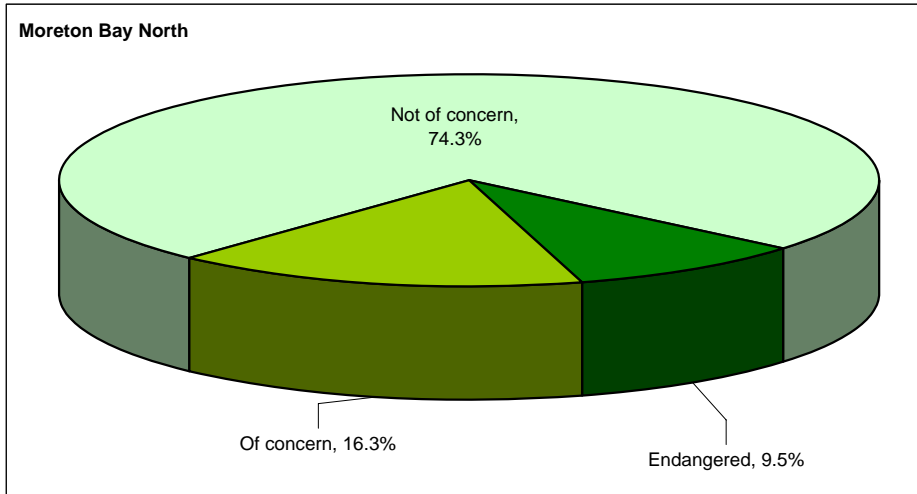
LGA	Endangered		Of concern		Not of concern		Not vegetation		TOTAL
	Hectare	%	Hectare	%	Hectare	%	Hectare	%	
Caboolture	2,914	2.4%	7,238	6.0%	23,423	19.3%	87,513	72.3%	121,089
Caloundra	2,915	2.7%	7,335	6.7%	25,402	23.2%	73,896	67.5%	109,548
Kilcoy	1,313	0.9%	8,261	5.7%	59,258	41.0%	75,623	52.4%	144,455
Maroochy	895	0.8%	10,216	8.8%	38,552	33.2%	66,428	57.2%	116,091
Noosa	5,203	6.0%	13,633	15.7%	27,610	31.8%	40,288	46.4%	86,734
Pine Rivers	777	1.0%	1,175	1.5%	26,253	34.4%	48,182	63.1%	76,387
Redcliffe	17	0.5%	36	1.0%	389	10.8%	3,143	87.7%	3,585
NORSROC	14,035	2.1%	47,893	7.3%	200,886	30.5%	395,073	60.1%	657,888

CATCHMENT	Endangered		Of concern		Not of concern		Not vegetation		TOTAL
	Hectare	%	Hectare	%	Hectare	%	Hectare	%	
Brisbane River	684	2.1%	4,176	12.6%	14,922	45.0%	13,395	40.4%	33,177
Caboolture River	1,387	2.9%	1,444	3.1%	14,922	31.6%	29,398	62.3%	47,151
Maroochy River	891	1.4%	4,766	7.7%	13,243	21.5%	42,811	69.4%	61,711
Mary River	1,094	0.7%	8,898	5.7%	66,779	43.0%	78,710	50.6%	155,481
Mooloolah River	594	3.0%	1,219	6.2%	5,673	28.8%	12,238	62.0%	19,724
Moreton Bay	17	0.5%	35	1.0%	389	10.8%	3,166	87.8%	3,607
Noosa River	4,078	7.4%	10,599	19.2%	20,241	36.6%	20,329	36.8%	55,247
Pacific Ocean	48	0.9%	1,037	19.9%	587	11.3%	3,543	67.9%	5,215
Pine Rivers	777	1.1%	1,175	1.6%	25,485	34.8%	45,816	62.5%	73,253
Pumicestone Passage	3,498	4.8%	8,420	11.5%	8,758	11.9%	52,727	71.8%	73,403
Stanley River	966	0.7%	5,988	4.6%	39,775	30.8%	82,590	63.9%	129,319
Stumer Creek	0	0.0%	125	9.6%	764	59.1%	404	31.2%	1,293
NORSROC	14,034	2.1%	47,881	7.3%	211,539	32.1%	385,126	58.5%	658,581

273,455



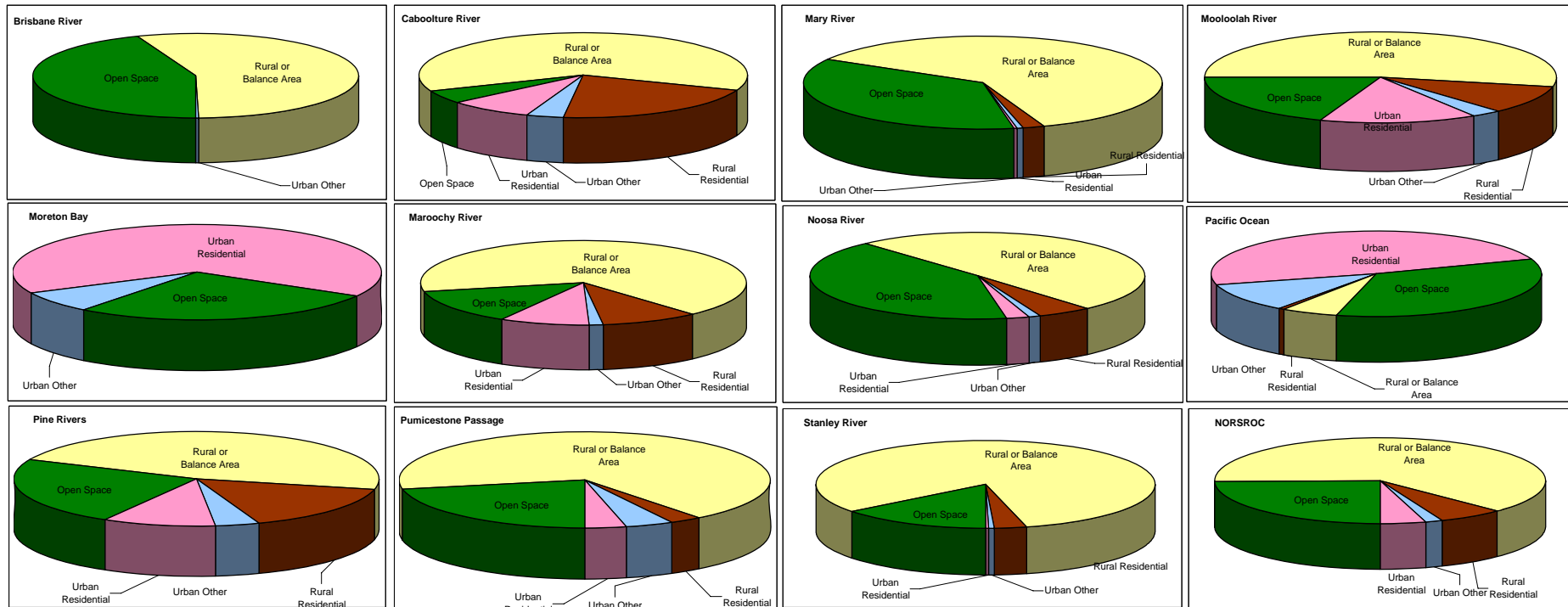
COMMUNITY OF INTEREST	Endangered		Of concern		Not of concern		Total Vegetation		Coverage
	Hectare	%	Hectare	%	Hectare	%	Hectare	%	%
Moreton Bay North	4,695	9.5%	8,049	16.3%	36,782	74.3%	49,527	18.8%	29.4%
Sunshine Coast	6,598	9.4%	20,807	29.7%	42,572	60.8%	69,977	26.6%	40.6%
Sunshine Hinterland	2,742	1.9%	19,037	13.3%	121,532	84.8%	143,311	54.5%	45.1%
NORSROC	14,035	5.3%	47,893	18.2%	200,886	76.4%	262,815	100.0%	39.9%



NORSROC SUB-REGIONAL FRAMEWORK: Statistical Analysis
Vegetation Status by Protection

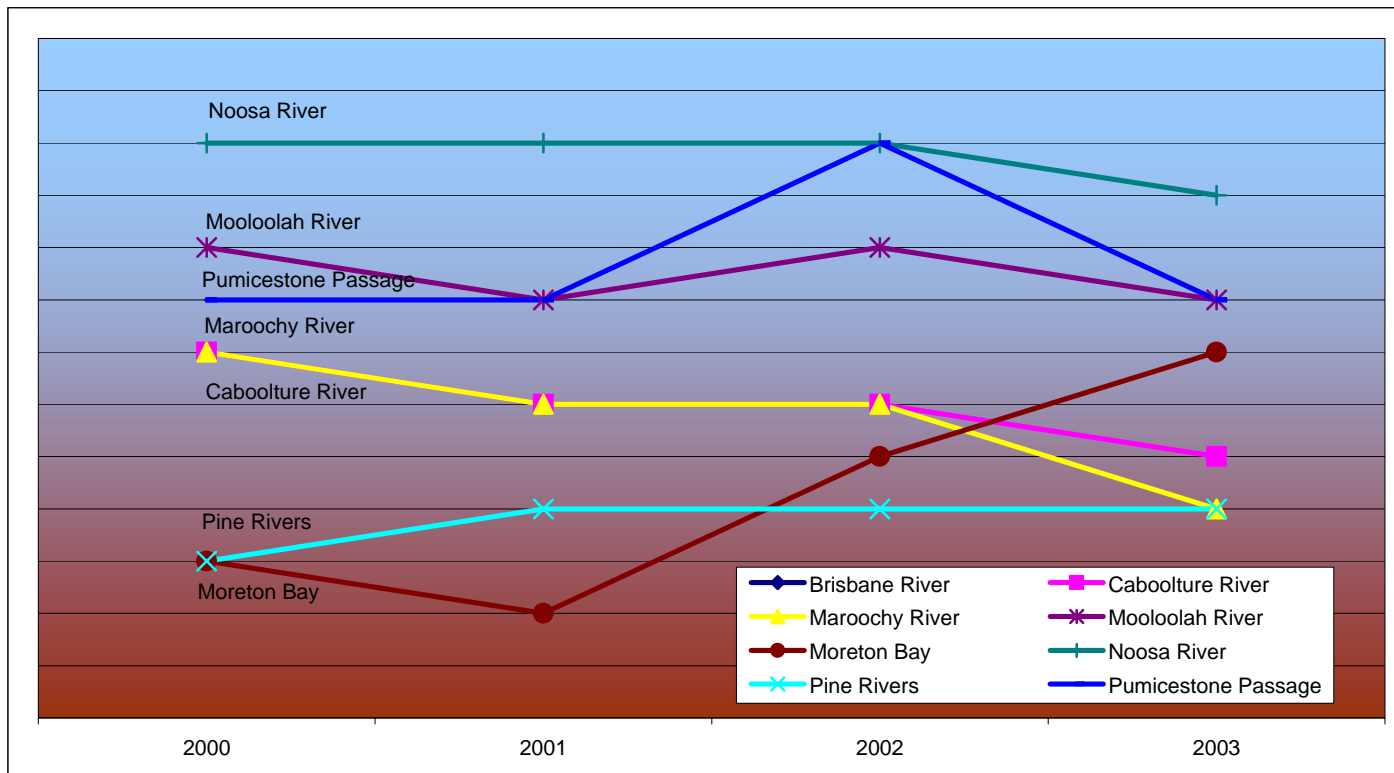
VEGETATION STATUS	Vegetation in Protective Tenure		Vegetation not in Protective Tenure		Total	
	Hectare	%	Hectare	%	Hectare	%
Endangered	3,344	23.8%	10,691	76.2%	14,035	22.7%
Of Concern	20,812	43.5%	27,081	56.5%	47,893	77.3%
NORSROC	24,157	39.0%	37,772	61.0%	61,929	100.0%

CATCHMENT	Open Space	Rural or Balance Area	Rural Residential	Urban Other	Urban Residential	TOTAL
Brisbane River	44.2%	55.5%	0.0%	0.3%	0.0%	100.0%
Caboolture River	5.1%	61.9%	21.0%	3.7%	8.3%	100.0%
Maroochy River	13.3%	66.8%	9.6%	1.4%	8.9%	100.0%
Mary River	36.1%	61.1%	2.1%	0.4%	0.4%	100.0%
Mooloolah River	19.6%	53.1%	10.1%	2.8%	14.4%	100.0%
Moreton Bay	27.2%	0.0%	0.0%	7.1%	65.7%	100.0%
Noosa River	41.1%	50.3%	5.2%	1.2%	2.2%	100.0%
Pacific Ocean	34.3%	5.6%	0.8%	10.6%	48.7%	100.0%
Pine Rivers	23.4%	46.9%	15.8%	4.1%	9.9%	100.0%
Pumicestone Passage	22.0%	67.5%	2.8%	4.2%	3.5%	100.0%
Stanley River	14.5%	81.8%	3.0%	0.5%	0.3%	100.0%
NORSROC	24.8%	62.8%	6.2%	1.8%	4.3%	100.0%



NORSROC SUB-REGIONAL FRAMEWORK: Statistical Analysis
Water Quality x Report Card

CATCHMENT	Estuarine				Freshwater	
	2000	2001	2002	2003	2002	2003
Brisbane River					D+	D
Caboolture River	C+	C	C	C-	C	B+
Maroochy River	C+	C	C	D+	C+	C
Mary River						
Mooloolah River	B	B-	B	B-	C+	C
Moreton Bay	D	D-	C-	C+		
Noosa River	A-	A-	A-	B+	A-	A-
Pacific Ocean						
Pine Rivers	D	D+	D+	D+	C	C
Pumicestone Passage	B-	B-	A-	B-	C	B+
Stanley River					B-	B-



NORSROC SUB-REGIONAL FRAMEWORK: Statistical Analysis
Water Supply Yields & Demand

NATURE OF USE	Annual Demand (ML)	
	2004	2021
Urban	370,000	515,000
Rural	276,000	276,000
Power	29,000	55,000
Total Demand	675,000	846,000
Yield at 2004 Levels	625,000	625,000
Shortfall (without increased yields for rural productivity and environmental flows)	50,000	221,000

NORSROC SUB-REGIONAL FRAMEWORK: Statistical Analysis
 Water Supply Catchments x Col

COMMUNITY OF INTEREST	Water Supply Catchment		Not Water Supply Catchment		TOTAL
	Hectare	%	Hectare	%	
Moreton Bay North	60,115	35.7%	108,321	64.3%	168,435
Sunshine Coast	7,353	4.3%	164,940	95.7%	172,293
Sunshine Hinterland	141,171	44.4%	176,706	55.6%	317,876
NORSROC	208,638	31.7%	449,966	68.3%	658,604

